



COLLECTION 2017/2018

Innovative sanitary ware for the whole house!

wirquin

Quite simply!

FRAMES

MECHANISMS

TOILET SEATS

WC PIPES

HYDROTHERAPY

SHOWER

BATH

WASHBASIN

SINK

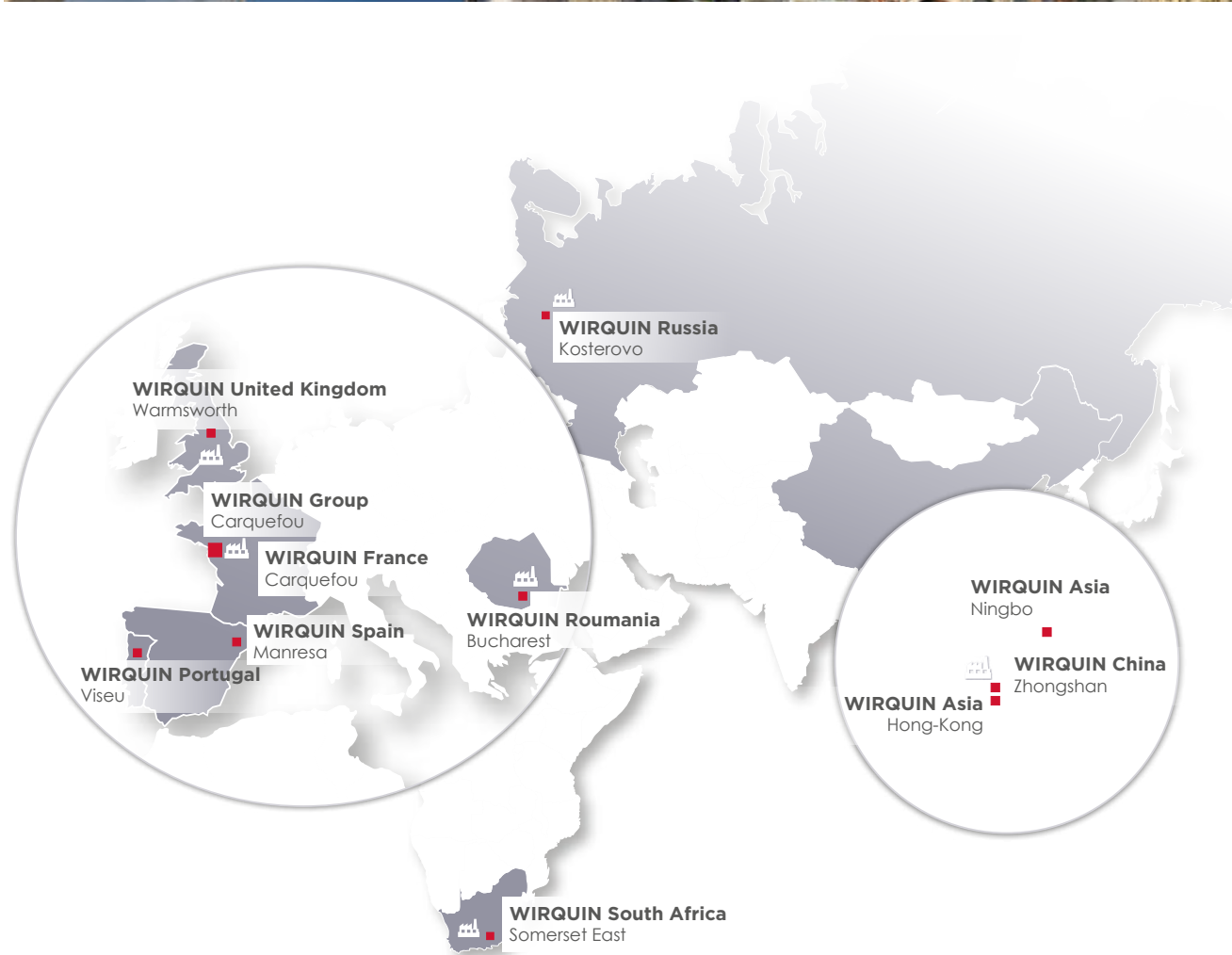
AROUND THE HOUSE

INDEX

COLLECTION 2017/2018



Wirquin





an international group at your side

■ AN INTERNATIONAL GROUP

WIRQUIN is a family group with an international mission. With 11 subsidiaries (UK, South Africa, China, Spain, France, Portugal, Romania and Russia), including 6 production sites and 3 permanent sales offices (Benelux, Italy and Poland), the group has more than 1400 employees.

■ WORLD-WIDE DISTRIBUTION

WIRQUIN is continually striving to provide the best products and services to its clients all over the world. More than 70 sales representatives at your service make 300 customers visits and 600 phone contacts a year in more than 80 countries.

■ WIRQUIN THE SANITARY WARE SPECIALIST

Over the years, the product range has widened. Today, WIRQUIN is the only French manufacturer of sanitary ware with products for the whole house:

- TOILETS: IMAGE&O and SMART wall-hung WCs, EASY water-saving flush kits and MACDEE MOTION, decorative seats and more.
- BATHROOM: EXPRESS'EAU walk-in shower solutions, wastes for baths and sinks, QUICK-CLAC systems, low profile shower wastes, hydrotherapy and more.
- KITCHEN: Complete sink units and SENZO space-saving solutions.
- AROUND THE HOUSE: Universal MAGICFLEX connection solutions, washing machine fittings, etc.

- 1977: S.A. WIRQUIN Plastiques was set up with industrial facilities at Carquefou, France.
- 1995: Creation of a distribution subsidiary, WIRQUIN CALAF in Spain.
- 1999: Acquisition of URBIS SANITAR (Romania) which became WIRQUIN ROMANIA.
- 2004: Creation of WIRQUIN SOUTH AFRICA.
- 2005: Creation of WIRQUIN RUS (Russia). Creation of the joint-venture GOLDEN PLASTIC INDUSTRIAL (China).
- 2006: Creation of WIRQUIN MANUFACTURING in South Africa
- 2007: WIRQUIN PLASTIQUES (France) is certified ISO 9001. Creation of WIRQUIN ASIA (HK) and office in Ningbo (PRC).
- 2009: WIRQUIN PLASTIQUES is certified ISO 14001. Acquisition of AIMAS (WIRQUIN AIMAS) (Zhongshan CHINA), 3rd largest Chinese manufacturer of toilet seats, flushing mechanisms, toilet valves and cisterns.
- 2011: Acquisition of CME Sanitary Systems (UK) which became WIRQUIN Ltd, manufacturer of toilet seats and WC mechanisms, UK market leader.
- 2012: Merger of the two South African entities to create WIRQUIN MANUFACTURING SOUTH AFRICA.
- 2013: Acquisition of the Russian company VIRPLAST and merger with WIRQUIN RUS.

Wirquin

■ CERTIFIED WIRQUIN QUALITY

Some of our products meet all the requirements of the following standards (technical tests and monitoring audits):



NF*



WaterMark

WaterMark*



WRAS*

■ CERTIFIED INDUSTRIAL ORGANIZATIONS

All our production sites are ISO 9001 certified (quality management) and a process has been entered into to obtain certification for ISO 14001 (environmental management) and OSHAS 18001 (occupational safety and health management) until 2020.



WIRQUIN AFRIQUE DU SUD



WIRQUIN CHINE



WIRQUIN FRANCE



WIRQUIN LTD



WIRQUIN ROUMANIE



WIRQUIN RUSSIE

* Certified products listed hereafter in the catalogue.

is committed to sustainable development

Dual-flush mechanism



By installing a water-saving mechanism, set to 3 litres for a small flush and 6 litres for a full flush, you can save up to 40,000 litres of water per year (i.e. €120 at €3 per m³) for a family of four.



Shower stop

WIRQUIN supplies Shower stop systems incorporated into the shower head. This small lever lets you stop the water while you soap yourself while maintaining the temperature settings.

A flow reducer seal can also be installed on the handshower to reduce water consumption as much as possible.



■ REDUCING YOUR WATER BILL

Saving water has become one of the major challenges of the 21st century. With water bills continually on the increase and greater demand, the best way of keeping water available and accessible to all is to stop wastage. There are many small things you can do every day to save water.

As part of its ongoing eco-friendly approach, Wirquin is developing water saving products such as:

- dual-flush mechanisms: up to 40,000 L of water saved per year.
- shower stop systems: halves water consumption.
- flow reducer seals: up to 60% water saving.



■ A STANDARDISED APPROACH

WIRQUIN markets products based on standards. The standards define all the quality requirements of a product.

The technical characteristics of certified products are checked by official organisations (such as CSTB-for example) who certify that our products comply with the NF standard and that they are manufactured using processes where quality is continuously monitored.



The ACS (statement of conformity for sanitary ware) certifies the suitability of a material or an object to come into contact with water destined for human consumption. All our hydrotherapy products are ACS-certified.



■ GUARANTEES

We use all our professional skills in order to create quality products with the aim of satisfying you over the long term.

We issue a guarantee subject to the terms and conditions and periods stated in our general conditions of sale, an extract of which is given in this catalogue.

demands quality at all levels

■ DESIGNER OF INNOVATIONS

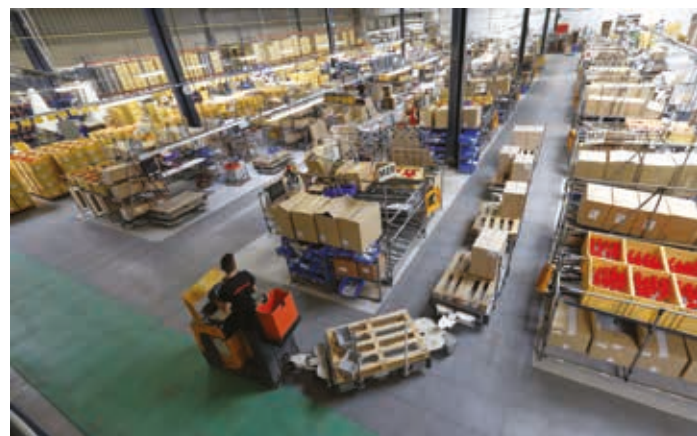
The company designs and manufactures sanitary ware. Always the leader in this field, the company invests 5% of its turnover in Research & Development.

The innovative products (on average 10 per year) launched on the market are intended to simplify plumbing jobs for the general public.

■ CREATOR OF SOLUTIONS

WIRQUIN is also an innovator with regards to merchandising and packaging available in different versions and which can be customised and adapted. The company also drives the development of new sales concepts and proposals on the optimisation and profitability of retail display space.

The WIRQUIN Group, creator of solutions and services continually listens to the needs of its customers and consumers and supports them throughout their projects.



■ POWERFUL TOOLS

The 6 factories of the Wirquin Group are equipped with over 200 leading-edge machines including compression and injection presses, blow moulding machines and extrusion lines. This amounts to more than 15.000 tonnes of raw materials being transformed per year.

■ QUALITY ABOVE ALL

This is what the Group is dedicated to. To achieve this, a team of technicians tests and inspects the products under user conditions before they are marketed in order to ensure optimum quality to the users (flow, watertightness, durability, assembly instructions, etc.).

Wirquin is there

■ DOCUMENTATION AND INSTALLATION SUPPORT TOOLS

WIRQUIN provides you with the diagrams, product sheets and detailed technical instructions you need to launch our latest innovations, as well as installation videos to help individuals.

All this information can be found on Wirquin's website: www.wirquin.com.

Our goal is to help consumers find solutions by providing a comprehensive product offer; a user-friendly search engine, detailed product information, a link to our YouTube channel, geolocation to find out where to buy our products, etc.



to guide and advise you during your projects



Soft close toilet seat



Unclippable toilet seat



Topfix hinge



Dual flush pushbutton mechanism



Single flush pushbutton mechanism



Water saving



Quiet



Space-saving



100% hygiene



Bottom inlet



Side inlet



Wall-hung WC



Lock +



Close-coupled cistern



Low-level cistern



High-level cistern



Rigid



Flexible



Extendable



To be glued



Push-fit



Manual close



Quick-Clac closure



Plug closure



Cable closure



Water seal:
prevents smells



Flow rate



Hose size



Stretch



Rotating nut



Stop jet



Aerator



Switch



Touch



Comfort



Strength



Adjustable wall
bracket or adjustable
shower head



Water saving



Brass ball joint



Anti-limescale
Easy clean



Stop jet



Number of jets



LED



Duo
(handshower + hose)



Trio
(handshower + hose
+ handshower bracket)



Brass column



Showerhead dimension



Showerhead diameter



Stainless steel bar



Stainless steel overhead shower



ABS overhead shower



Stop jet



Brass bar



Brass inverter



Aluminium bar



Ceramic inverter



Thermostatic cartridge



For all hot water systems



Ceramic inverter



Pull mechanism

TOILETS

- CISTERNS	p.14
- MECHANISMS	p.22
- BALL VALVES.....	p.32
- TOILET SEATS	p.38
- PAN CONNECTORS.....	p.62
- INDEX.....	p.146



BATHROOM

- HYDROTHERAPY.....	p.68
- Columns.....	p.72
- Handshowers	p.86
- Sets.....	p.96
- Shower kits	p.101
- Flexible hoses.....	p.105
- SHOWER :	p.108
- Walk-in shower.....	p.110
- Shower wastes.....	p.111
- BATH	p.116
- WASHBASIN	p.122
- INDEX.....	p.146



KITCHEN

- SINK UNITS :p.134
 - Traps.....p.136
 - Kitsp.140
- INDEX.....p.146



AROUND THE HOUSE

- CONNECTORS.....p.142
- INDEX.....p.146



FRAMES

MECHANISMS

TOILET SEATS

WC PIPES

HYDROTHERAPY

SHOWER

BATH

WASHBASIN

SINK

AROUND THE
HOUSE

INDEX



NISTEEN

How to choose your **cistern**?

TYPES OF CISTERN:



Exposed
cistern



Concealed cistern
(furniture)



In-wall cistern

TYPES OF COMMANDS:



Levers



Infrared



Button



Cordon

NO TOUCH CISTERN ISEO CLEAN PLUS



- **INFRARED:** no need to touch the button to flush the toilet. Just place your hand a few centimetres from the blue cell and the toilet flushes.
- **WATER SAVING SOLUTION:** dual flush 3L/6L
- fills quickly and quietly
- fitted with sound and thermal insulation
- more stable (rear stop)
- centre-to-centre distance adjustable to pan
- dimensions: H 368 x W 380 x D 160 mm

Reference	EAN Code	Packaging	Pallet Qty	
50720130	3375537200528	Box	01/48	W

* Except button guaranteed 1 year

ADVANTAGES OF THE PLASTIC CISTERN

■ RENOVATION SOLUTION

Plastic CISTERNS can be sold separately unlike ceramic CISTERNS which are sold in a complete WC pack.

■ EASY TO INSTALL

Plastic CISTERNS are light and easy to handle.

■ ECONOMIC

Good quality/price ratio.

ELAN CISTERN



- flush volumes to be varied between 6/7/9 litres
- internal overflow
- 14" x 9" flushpipe included
- W - 505mm x H - 327mm x D - 150mm

Low level cistern chrome lever



Reference	EAN Code	Packaging	Pallet Qty	
CFE41WH	5018787380029	Box	01/40	M

High level cistern cord and pull



Reference	EAN Code	Packaging	Boxed Qty	
CFE02WH	5018787340023	Box	01/40	M

LONDON CISTERN



- 2 in 1 high-level and low-level cistern
- SINGLE FLUSH
- flush plate or cord
- side entry fill
- comes with flush pipe (high-level cistern)
- W - 425mm x H - 359mm x D - 154mm

Reference	EAN Code	Packaging	Pallet Qty	
50120150	5017134132007	Box	01/32	M

HIDEAWAY CISTERN

10
YEARS

- single flush
- side entry
- flush volumes to be varied between 6/7/9 litres
- internal overflow
- chromed lever 210mm
- WRAS products included top access
- W - 505mm x H - 312mm x D - 146mm

Reference	EAN Code	Packaging	Pallet Qty	
CFH14CP	5017134101348	Box	01/40	W

PNEU COMPACT II CISTERN

10
YEARS

- pneumatic dual flush front and top access side inlet 2" outlet cistern with Kara 72mm button
- water saving flushing valve
- fully assembled
- internal overflow
- WRAS approved inlet and outlet valve
- W - 336mm x H - 320mm x D - 140mm

Reference	EAN Code	Packaging	Pallet Qty	
CPL63CP	5017134119497	Box	01/54	M

DUO COMPACT CISTERN

10
YEARS

- most compact cistern on the market
- water saving flushing valve 6/4 + 4/2.6 litre
- 1 1/2" cable operated
- JOLLYFILL delayed action inlet valve
- complete with isolation valve
- internal overflow
- lid fixing screws supplied for additional security
- WRAS approved flushing and inlet valve
- W - 336mm x H - 320mm x D - 140mm
- optional front access chrome finish fascia plate available

Reference	EAN Code	Packaging	Pallet Qty	
CDC40CP	5017134119817	Box	01/54	M

Smart Ruby

Wall-mounted toilet for load-bearing walls



■ QUICK EASY INSTALLATION!

- adjustable inlet connector and extendible waste connector:
- no measuring or cutting, unlike conventional wall-hung toilets

Install on load bearing wall

10 YEARS



SPACE SAVING 36 CM



SMART RUBY COMPLETE WALL-HUNG WC PACK

- LUNE white flush plate
- MELODY thermoset seat
- CONTEMPORAINE ceramic pan

Included in the pack:

- wall and floor mounted H = 99 to 121 cm D = 17
- floor and wall screw set
- wall brackets
- JOLLYFILL 3/8" brass float valve
- standard WIRQUIN cable mechanism
- stopcock
- adjustable water inlet connector
- telescopic waste connector
- waste elbow pipe dia. 100 mm



Reference	EAN Code	Packaging	Pipe	Language	Pallet Qty	
55721149	3375537210749	Box	Diam. 100 mm	FR/NL	01/04	w

Install on load
bearing wall



10
YEARS



PPX WC FRAME

- wall & floor mounted
- height adjustable: 958mm - 1178mm - P = 17
- load tested to 400kg
- water saving dual flush 3/6L

Reference	EAN Code	Packaging	Pallet Qty
55718835	8713381018145	Box	01/10 w

PUSH PLATES

2
YEARS



LUNE white

Reference	EAN Code	Packaging	Boxed Qty
55719668	3375537195954	Box	01/16 w



LUNE matt chromed

Reference	EAN Code	Packaging	Boxed Qty
55719669	3375537195961	Box	01/16 w



LUNE gloss chromed

Reference	EAN Code	Packaging	Boxed Qty
55719670	3375537195978	Box	01/16 w



LUNE matt black

Reference	EAN Code	Packaging	Boxed Qty
55719691	3375537196180	Box	01/16 w



EGAL matt chromed

Reference	EAN Code	Packaging	Boxed Qty
55719671	3375537195985	Box	01/16 w



EGAL matt and gloss chromed

Reference	EAN Code	Packaging	Boxed Qty
55719672	3375537195592	Box	01/16 w



EGAL chromed black

Reference	EAN Code	Packaging	Boxed Qty
55719673	3375537196005	Box	01/16 w



CISTERN LEVERS

- chrome Victorian white ceramic and chrome plated on metal lever



Reference	EAN Code	Packaging	Boxed Qty	
DCA01WH	5017134103106	Bag	20	M
10120301	50171341132953	Bag	30	M

- chrome Sofia 105mm chrome plated on metal fingertip lever



Reference	EAN Code	Packaging	Boxed Qty	
DCA01CP	5017134103076	Bag	80	M
10120302	5017134132960	Bag	30	M

- chrome Sofia 105mm chrome plated on plastic lever



Reference	EAN Code	Packaging	Boxed Qty	
DCA15CP	5017134103380	Bag	50	M
10120303	5017134132977	Bag	30	M

PIPES



- 14" x 9 " low flush pipe

Reference	EAN Code	Packaging	Boxed Qty	
DFP01WH	5017134104011	Bulk	100	M



- low level flush pipe

Reference	EAN Code	Packaging	Boxed Qty	
10120287	5017134132847	Bulk	10	M

GASKETS



- flush pipe bung connector external

Reference	EAN Code	Packaging	Boxed Qty	
10120279	5017134132762	Bag	20	M



- flush pipe bung connector internal

Reference	EAN Code	Packaging	Boxed Qty	
10120280	5017134132779	Bag	20	W

KIT



- close coupling kit (1 1/2" outlet) complete with close coupling washer

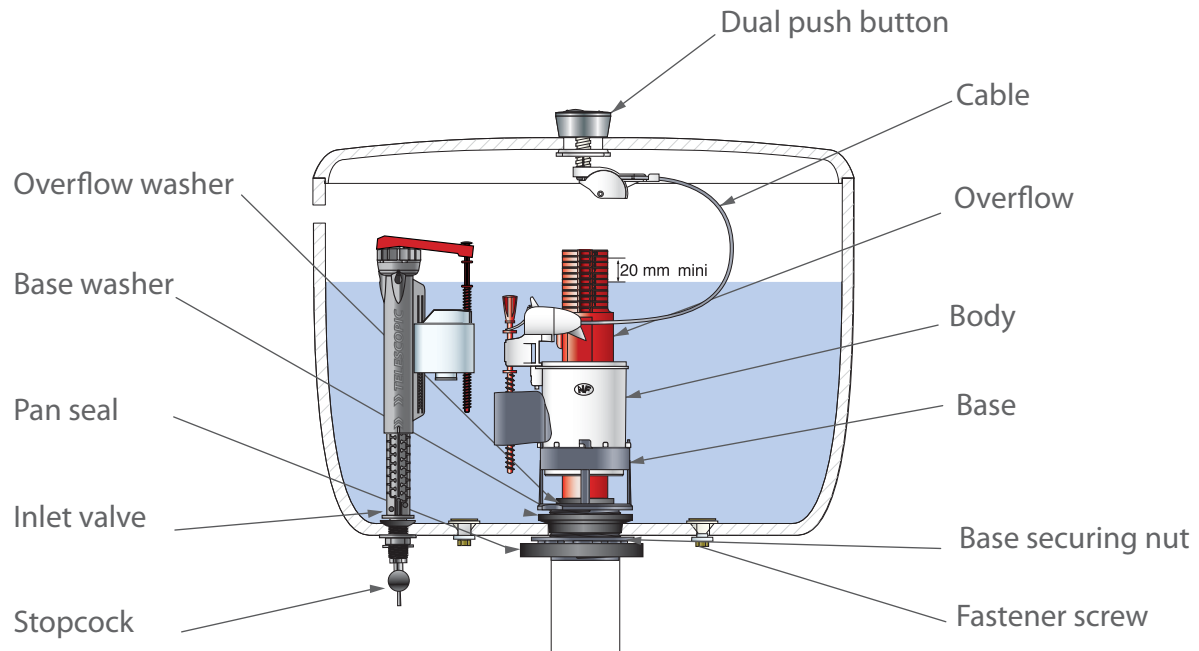
Reference	EAN Code	Packaging	Boxed Qty	
DCPI400	5017134103731	Bag	100	M

MECHANISMS



How to choose your flushing mechanism

MAKE-UP OF A COMPLETE FLUSHING KIT:



TYPES OF FLUSHING MECHANISM:



Dual pushbutton



Handle

WATER SUPPLY TO THE FLOAT VALVE:



Side entry



Bottom entry

Trendy

For the first time on the market: the EASY mechanism can be installed without having to remove the cistern!



EASY
to install

No need
to disassemble
the tank

UNIVERSAL
replaces all standard
mechanisms

EASY

Dia. hole in lid
14 to 58 mm

For cistern height 320 to 420 mm



Insert, press down,
and you're done!

Butyl seal,
guaranteed leak-proof!

**EASY**

dual pushbutton with cable

- **INSTALLATION HAS NEVER BEEN EASIER:** replace your flush mechanism in a snap! No need to remove the cistern!
- **ECONOMICAL:** dual flush mechanism 3L/6L

No need to remove the cistern

ADVANTAGES OF EASY

- **NEW EASY SYSTEM (PATENTED)**
- **WATER SAVING BUTTON 3 L / 6 L WITH THE EASY SYSTEM**
easily install and remove the button.
- **CABLE MECHANISM**
automatically adjusts to the height of the cistern.
- **PRE-ADJUSTED MECHANISM**
for a standard cistern.

Reference

10120305

EAN Code

5017134132991

Packaging

Boxed

Boxed Qty

4/-

M



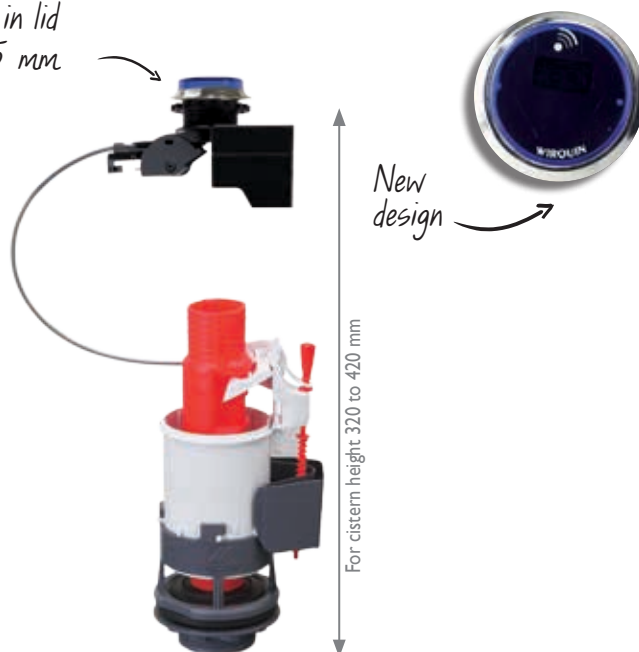
100% hygiene

infrared flush system to control flush volume



WC TRONIC 2

Dia. hole in lid
38 to 45 mm



WC TRONIC 2

Dual-flush cable mechanism and infrared activation

- **100% HYGIENIC:** hands-free flushing
- **INTUITIVE:** infrared detection
- **ECO-STOP:** control your consumption of water
- **EASY TO INSTALL**
- runs on 4 LR6 batteries (not included)

Reference	EAN Code	Packaging	Boxed Qty	
10120307	5017134133011	Boxed	4/-	M

ADVANTAGES OF WC TRONIC 2

■ THE 100% HYGIENIC SOLUTION

Just place your hand a few centimetres from the blue cell and the toilet flushes.

■ TOTAL CONTROL OVER YOUR CONSUMPTION

The **ECO-STOP** function allows you to control the flush volume! Just move your hand away to stop the water.

■ PERFORMANCE

Robust and easy to install, this is THE high-tech solution for your toilet.

■ ULTRA EASY INSTALLATION

Just connect the infrared unit to your cable and it works!

*Excluding electronic unit guaranteed 1-year

WATER SAVING SOLUTION

DUAL FLUSH

Toilets represent about 32% of your total water consumption. To reduce this you just need to limit the amount of water used. By installing a water-saving mechanism, set to 3 litres for a small flush and 6 litres for a full flush, **you can save up to 40,000 litres of water** per year (i.e. €120 at €3 per m3) for a family of four*.

ADVANTAGES OF THE CABLE MECHANISM

100% READY TO USE

The cable system allows the height of the cistern to be changed automatically without any adjustment!

CLEVER

The cable compensates for alignment discrepancies between the hole in the cover and the cistern.

VERY EASY TO INSTALL

The cable clips directly onto the pushbutton. Furthermore, the cover can be opened without dismantling the mechanism.



Dia. of hole in lid
14 to 45 mm



MW²

dual flush cable mechanism

- **ECONOMIC**: dual flush mechanism 3L/6L.
- **READY TO USE**: cable system does not require adjustment!
- **COMPACT**: the float moves along a vertical axis which is particularly suitable for narrow ceramic CISTERN.
- **CLEVER**: compensates for alignment faults.
- **EASY FITTING AND DISMANTLING**
- **RELIABLE**: tested for more than 200.000 cycles, that's 4 people for **35 years!**

with 2" + 1 1/2" base

- 2" Jollyflush top or front dual flush valve

Reference	EAN Code	Packaging	Boxed Qty	
10120304	5017134132984	Bag	4/-	w

with 2" base

- 2" Jollyflush top or front dual flush valve

Reference	EAN Code	Packaging	Boxed Qty	
14010401	3375537139736	Bag	30/120	w

with 1 1/2" base

- 1 1/2" Jollyflush top or front dual flush valve
- extendable overflow (240 to 270mm)

Reference	EAN Code	Packaging	Boxed Qty	
14000001	3375539046421	Bag	1/35	w

* Average value per m3 of water.

10
YEARS

UNIVERSAL KIT

1 1/2" & 2" dual flush mechanism

+ Jollyfill telescopic adjustable inlet valve

- **UNIVERSAL FLUSH KIT** Complete replacement kit for 99% of bottom entry close coupled cisterns
- extendable overflow (240 to 270mm)
- adjustable JOLLYFILL telescopic, delayed action, space saving, inlet valve

Reference	EAN Code	Packaging	Boxed Qty	
10120208	5017134133004	Boxed	4/-	M



10
YEARS



MACDEE MOTION UNIVERSAL SIPHON

- unique all-in-one universal dual flush siphon
- most compact siphon on the market
- widest range of height options on the market
- fastest flush rate on the market
- adjustable flush volumes

Reference	EAN Code	Packaging	Boxed Qty	
I0120045	5017134129816	Box	08	M



METRO 8" DUAL FLUSH SIPHON

- water saving dual flush
- high level of reliability
- flush volume can be varied between 6/7/9 litres, making it suitable for replacement installations
- with siphon backnut, coupling nut, sealing washer and low level flush pipe seal as standard
- complete with internal overflow

Reference	EAN Code	Packaging	Boxed Qty	
10120312	501713413066	Box	30	M



METRO RAPID OBLONG 9" SIPHON

- ideal for use in standard size cisterns
- easy maintenance / replacement : no need to remove the cistern
- flush volumes can be varied between 6/7/9 litres
- complete with siphon backnut, coupling nut, sealing washer and low level flush pipe seal as standard
- internal overflow
- WRAS approved

Reference	EAN Code	Packaging	Boxed Qty	
DSY8925	5017134105223	Bag	10	W

WHY A TELESCOPIC
INLET VALVE?

■ CLEVER

Whatever the height of the cistern, the valve is able to adapt by means of its adjustable telescopic body.

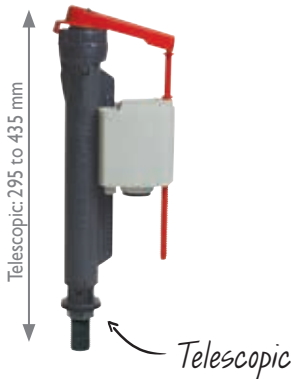
■ EASY TO INSTALL

With its unlocking telescopic body, the height of the valve can be adjusted and locked again simply by turning.

Can be turned through 90° to the left or right without dismantling and so does not get in the way of the operation of the mechanism.

■ PATENTED BREAKAGE PREVENTION SYSTEM

Also has a clutched safety system which avoids over-tightening (patented breakage prevention system).



JOLLYFILL TELESCOPIC

bottom entry/servo-valve

- **TELESCOPIC:** adapts to all cistern heights
- **PATENTED UNBREAKABLE HEAD:** patented breakage prevention system (against over-tightening)
- **COMPACT:** ideal in narrow ceramic cisterns
- **QUIET:** fills quickly and very quietly
- **ADJUSTMENT:** simple and accurate adjustment of water level by unclipping the screw
- **QUICK FILLING:** 6 litres en **33 seconds** at 3 bar pressure
- 0,1 to 16 bar
- withstands pressure peaks (20 bar)
- anti-siphoning
- eliminate water hammer

1/2" plastic



Reference	EAN Code	Packaging	Boxed Qty	
10120028	5017134129311	Boxed	24	M

1/2" brass



Reference	EAN Code	Packaging	Boxed Qty	
10120029	5017134129434	Boxed	24	M

3/8" brass



Reference	EAN Code	Packaging	Boxed Qty	
16110011	3375537150441	Bag	36	w



JOLLYFILL FIX

bottom entry/servo-valve

- height 9 1/2"
- **COMPACT**: ideal in narrow ceramic cisterns
- **QUIET**: fills quickly and very quietly
- **ADJUSTMENT**: simple and accurate adjustment of water level by unclipping the screw
- **QUICK FILLING**: 6 litres en **33 seconds** at 3 bar pressure
- operates at low and high pressure
- withstands pressure peaks
- anti-siphoning
- eliminate water hammer



1/2" plastic

Reference	EAN Code	Packaging	Boxed Qty	
16100006	3375537147724	Bag	36	W



1/2" brass

Reference	EAN Code	Packaging	Boxed Qty	
16100007	3375537147724	Bag	36	M



SILENTA BALL VALVE

bottom entry/ball valve

- height 8,5"
- 1/2" plastic end
- 1,5L/min at 0,1 bar
- 0,1 to 14 bar
- BS1212: Part 3
- UK manufactured
- complete with fittings
- quick and easy to install pedestal



1/2" plastic

Reference	EAN Code	Packaging	Boxed Qty	
10120296	5017134132908	Bag	16	M

WHY A VALVE WITH A ROTATING HEAD?

■ CLEVER

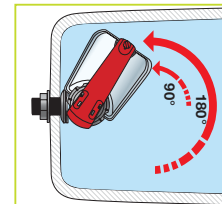
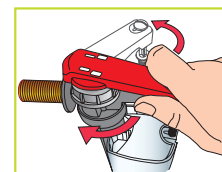
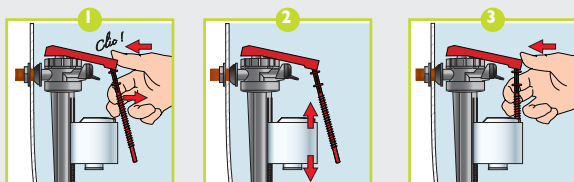
The ingenious rotating head may be located in even the smallest corners and avoids any contact between the valve and the mechanism.

■ COMPACT

The rotating head allows the float to be turned through 180° and saves space which is particularly important in narrow ceramic CISTERN.

ADJUSTING THE WATER LEVEL IS QUICK AND SIMPLE!

- 1 The water level is adjusted by simply unclipping the screw from the float.
- 2 Then just position the float at the desired level.
- 3 Finally clip the screw back on the float.
QUICK AND SIMPLE!



JOLLYFILL FL150L3

side entry/servo-valve

- **INGENIOUS:** patented 180° rotating head
- **COMPACT:** ideal in narrow ceramic cisterns
- **QUIET:** fills very quietly (1st acoustic class **13 dBA**, i.e. quieter than a normal valve)
- **ADJUSTMENT:** simple and accurate adjustment of water level by unclipping the screw
- **QUICK FILLING:** 6 litres in **33 seconds** at 3 bar pressure
- 0.1 to 16 bar
- no back-siphoning
- prevents water hammer
- clean closure

1/2" plastic



Reference	EAN Code	Packaging	Boxed Qty	
10120310	5017134133042	Bag	12	M

1/2" brass



Reference	EAN Code	Packaging	Boxed Qty	
16300201	3375537150410	Bag	36	W

TOPY

10
YEARS

side entry/servo-valve



- **ULTRA-COMPACT:** ideal for very low ceramic cisterns or incurved cisterns
- water level can be adjusted just by turning the float
- **FILLING:** 6 litres in 42 seconds at 3 bar pressure
- 0.1 to 1.6 bar
- withstands pressure peaks
- no back-siphoning
- prevents water hammer

1/2" plastic

Reference	EAN Code	Packaging	Boxed Qty	
10120309	5017134133035	Bag	16	M

SILENTA

10
YEARS

side entry/ball valve



- 8 1/4" arm
- 1.5L/min at 0.1 bar
- 0.1 to 1.4 bar
- UK manufactured
- complete with fittings
- quick and easy to install pedestal

1/2" plastic

Reference	EAN Code	Packaging	Boxed Qty	
10120308	5017134133028	Bag	16	M

SILENTA

2
YEARS

brass 1/2" side entry part 2 ball valve



- brass high pressure valve (white seating)

Reference	EAN Code	Packaging	Boxed Qty	
10120331	5017134133264	Bag	16	M

WHAT TECHNOLOGY IS USED IN THE SERVO VALVE?

■ PRINCIPLE

When the flush is operated:

- 1 The float moves along the length of the valve body.
- 2 As the cistern fills, the float rises up and gradually closes the valve head.
- 3 The pressure in the servo valve chamber increases until the valve closes.

■ ADVANTAGES

- A more compact product which adapts to the vast majority of cisterns.
- A technology which meets NF standards criteria.
- Can cope with strong pressure variations.
- The cistern fills quickly.

BALL FLOAT

4 1/2" round



Reference	EAN Code	Packaging	Boxed Qty	
10120284	5017134132816	Bag	12	M

4 1/2" cylindric



Reference	EAN Code	Packaging	Boxed Qty	
10120285	5017134132823	Bag	12	M

KITS

siphon repair kit



Reference	EAN Code	Packaging	Boxed Qty	
10120295	5017134132946	Bag	50	M

cistern repair kit



Reference	EAN Code	Packaging	Boxed Qty	
10120288	5017134132854	Bag	25	M

close couple kit



Reference	EAN Code	Packaging	Boxed Qty	
10120291	5017134132885	Bag	16	M

close coupling kit



Reference	EAN Code	Packaging	Boxed Qty	
10120289	5017134132861	Bag	25	M

pan fixing kit



Reference	EAN Code	Packaging	Boxed Qty	
10120330	501734133257	Bag	25	M

part two ball valve repair kit



Reference	EAN Code	Packaging	Boxed Qty	
10120332	501734133271	Bag	25	M

JOLLYFLUSH PUSH BUTTON



dual flush chrome push button

Reference	EAN Code	Packaging	Boxed Qty	
10120290	5017134132878	Bag	30	M

WHITE BLANKING OFF PLUG



Reference	EAN Code	Packaging	Boxed Qty	
10120294	5017134132892	Bag	40	M

WASHERS

2" washer



Reference	EAN Code	Packaging	Boxed Qty	
10120292	501713412922	Bag	20	M

1 1/2" washer



Reference	EAN Code	Packaging	Boxed Qty	
10120293	5017134132939	Bag	20	M

part 3 ball valve diaphragm



Reference	EAN Code	Packaging	Boxed Qty	
10120281	5017134132786	Bag	40	M

jollyfill diaphragm washer



Reference	EAN Code	Packaging	Boxed Qty	
10120282	5017134132793	Bag	40	M

washer for flushing



Reference	EAN Code	Packaging	Boxed Qty	
10120283	5017134132809	Bag	40	M

TOILET SEAT



How to

3 TOILET SEAT RANGES:



Quality & simplicity!



Dare to be colourful!



Stylish and trendy!

ADVANTAGES:



TOP FIX : fitting of the seat from the top



QUICK RELEASE : make easier cleaning of the toilet seat



SOFT CLOSE : for a gentle, quiet and safe closing action
No more trapped fingers



Hold the seat in the pan

choose your toilet seat?

CHOICE OF MATERIAL

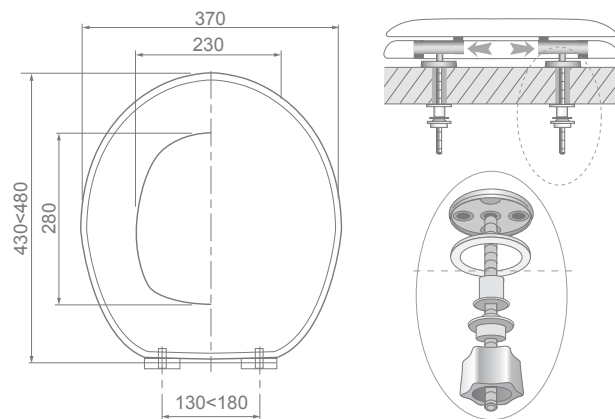
MATERIAL		ADVANTAGES
THERMOPLASTIC Synthetic resin (granules), injection softened and moulded. The thermoplastic used currently is polypropylene (PP).	+	RECYCLABLE MATERIEL UNBREAKABLE
THERMOSET Synthetic resin (powder or liquid) + catalyst (hardener), compression moulded.	+	SCRATCH-RESISTANT HIGH-DENSITY
RESIN Moulded polyester resin.	+	VERY TOUGH FLEXIBLE BUMPERS (ADHERES MORE FIRMLY TO THE PAN)
COMPRESSED WOOD Wood flour covered with synthetic resin, compression moulded then lacquered.	+	TOUGH SUITABLE FOR DIFFERENT DECOR



DIPLOMAT

Sleek, contemporary design!

- **MATERIAL:** compressed wood
- **STAINLESS HINGES:** anti-corrosion **soft close**
- **FINISH:** acrylic
- **TESTED FOR 20,000 CYCLES:** open/close cycles
- **ADAPTABLE:** universal shape
- **WEIGHT:** 3.4 kg
- **GUARANTEE:** 2 years



2
YEARS

DIPLOMAT WHITE SOFT CLOSE

Reference	EAN Code	Packaging	Boxed Qty	
20719794	3375537197217	Box	01/4	w

Recommended Accessories p. 59

WOODY LUX SOFT CLOSE

2
YEARS

Reference	EAN Code	Packaging	Boxed Qty	
20719569	3375537194971	Box	01/4	w

Recommended Accessories p. 59 

MAESTRO THERMOSET

2
YEARS

Reference	EAN Code	Packaging	Boxed Qty	
20722031	3375537219506	Box	01/4	c

Recommended Accessories p. 59 

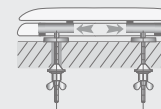
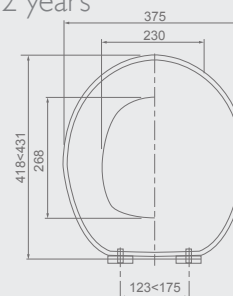
Designed by WIR



WOODY LUX SOFT CLOSE

Top quality !

- **MATERIAL:** compressed wood
- **TESTED FOR 20,000 CYCLES:** open/close cycles
- **ADAPTABLE:** universal shape
- **STAINLESS HINGES:** anti-corrosion
- **WEIGHT:** 2,8 kg
- **GUARANTEE:** 2 years



Designed by WIR



MAESTRO

- **MATERIAL:** thermoset
- **ADAPTABLE:** D shape
- **HINGES:** Soft Close, Topfix & Lock+
- **WEIGHT:** 2,1 kg
- **GUARANTEE:** 2 years

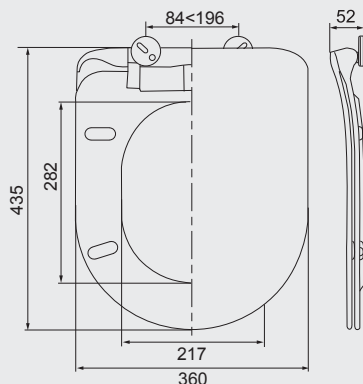
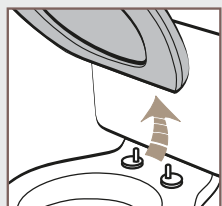


AMIRAL

Slimline design

■ **MATERIAL:** thermoset

■ **QUICK-RELEASE TOILET SEAT:**
easy to clean



■ **STAINLESS HINGES AND SOFT-CLOSE:**
anti-corrosion and quiet

■ **TOP FIX:** the seat is installed from the top



■ **TESTED FOR 20,000 CYCLES:** open/close cycles

■ **ADAPTABLE:**
standard D-shaped pans

■ **WEIGHT:** 2.2 kg

■ **GUARANTEE:** 2 years



CASUAL LINE AMIRAL WHITE

2
YEARS

Reference	EAN Code	Packaging	Boxed Qty
20721280	3375537212095	Box	01/4

Recommended Accessories p. 59



"D" shape

SAPPHIRE

2
YEARS

Reference	EAN Code	Packaging	Boxed Qty	
144418	5017134129380	Box	01/4	c

Recommended Accessories p. 59 

NATURAL BAMBOO

2
YEARS

Reference	EAN Code	Packaging	Boxed Qty	
20719732	3375537196593	Box	01/4	w

Recommended Accessories p. 59 

BAMBOO

- **MATERIAL:** bamboo
- **STAINLESS HINGES:** anti-corrosion
- **TESTED FOR 20,000 CYCLES:** open/close cycles
- **ADAPTABLE:** universal shape
- **WEIGHT:** 3,4 kg
- **GUARANTEE:** 2 years

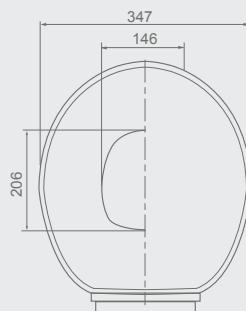
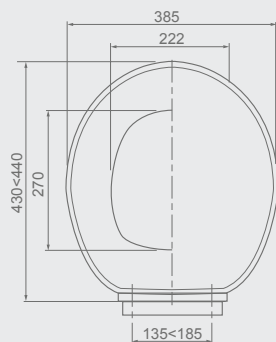
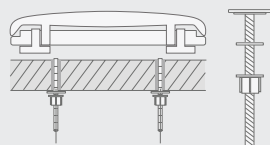




FAMILY SOFT CLOSE

Ingenious with its built-in child's reducer seat

- **MATERIAL:** polypropylene
- **DURABLE:** tested for 10,000 open/close cycles
- **ADAPTABLE:** universal shape
- **HINGES:** plastic
- **WEIGHT:** 1,5 kg
- **GUARANTEE:** 2 years



FAMILY SOFT CLOSE

2
YEARS

Reference	EAN Code	Packaging	Boxed Qty	
20719572	3375537195008	Box	01/4	w

Recommended Accessories p. 59



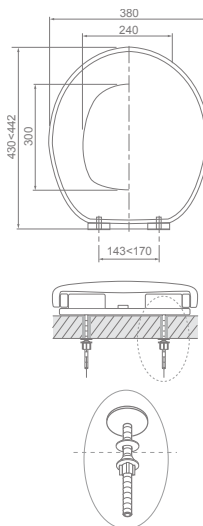
CHUT! UNCLIPPABLE SOFT CLOSE

2
YEARS

white - thermoset hinges

Reference	EAN Code	Packaging	Boxed Qty	
20718118	3375537180776	Box	01/4	w

Recommended Accessories p. 59



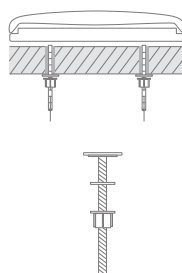
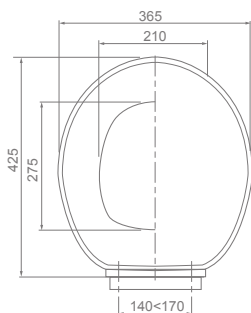
FIRST SOFT CLOSE

2
YEARS

white - plastic hinges

Reference	EAN Code	Packaging	Boxed Qty	
20718747	3375537186945	Box	01/4	w

Recommended Accessories p. 59



CHUT! UNCLIPPABLE

- **CHILD SAFETY:** fitted with a soft close system, the toilet seat closes gently
- **SILENT:** no more banging noises
- **HYGIENIC:** unclippable for easy cleaning
- **TOUGH:** very strong and scratch-resistant thermoset
- **DURABLE:** tested for 20,000 open/close cycles
- **MATERIAL:** thermoset resin, polypropylene screws
- **WEIGHT:** 2,4 kg
- **GUARANTEE:** 2 years

FIRST
SOFT CLOSE

- **CHILD SAFETY:** fitted with a soft close system, the toilet seat closes gently
- **SILENT:** no more banging noises
- **DURABLE:** tested for 10,000 open/close cycles
- **ADAPTABLE:** universal shape
- **MATERIAL:** polypropylene
- **WEIGHT:** 1,5 kg
- **GUARANTEE:** 2 years

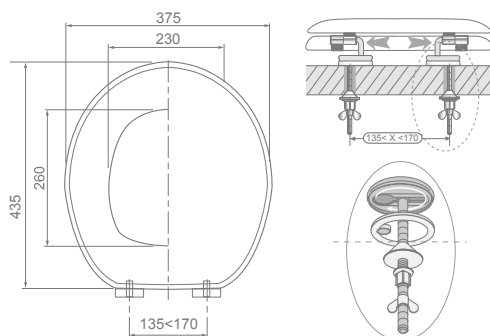
WOODY

2
YEARS

- compressed wood 3,2 kg
- tested for 20,000 open/close cycles
- weight: 3,2 kg

white - stainless steel hinges

Reference	EAN Code	Packaging	Boxed Qty
21230004	3375537127320	Box	01/4 w



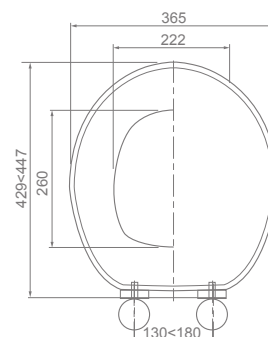
WOODY PARAMOUNT

2
YEARS

- compressed wood 3,2 kg
- weight: 3,2 kg

white - plastic hinges

Reference	EAN Code	Packaging	Boxed Qty
21230001	3375539049736	Box	01/5 w



CAVALCADE

2
YEARS

- compressed wood with a high gloss finish
- high quality chrome plated brass 'bar' hinge
- universal fitting
- 4 buffers for additional stability
- weight 2,6 kg

white - brass hinges

Reference	EAN Code	Packaging	Boxed Qty
144421	5017134129403	Box	01/5 c



FLAMENCO

2
YEARS

- long lasting and hardwearing polypropylene material.
- available with plastic or stainless steel hinge
- designed to fit modern sanitaryware
- weight: 1,4 kg

white - plastic hinges

Reference	EAN Code	Packaging	Boxed Qty
20120224	5017134132519	Box	01/4 c

white - stainless steel hinges

Reference	EAN Code	Packaging	Boxed Qty
20120225	5017134132502	Box	01/4 c

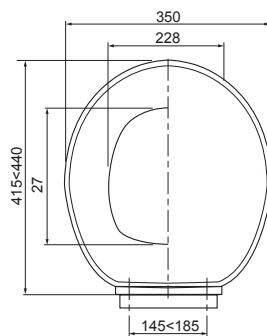
MELODY

2
YEARS

- thermoset
- smooth surface, easy to clean
- weight: 1,4 kg

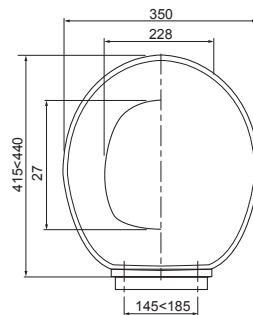
white - plastic hinges

Reference	EAN Code	Packaging	Boxed Qty	
20720284	3375537202089	Box	01/5	w



white - stainless steel hinges

Reference	EAN Code	Packaging	Boxed Qty	
20720285	3375537202096	Box	01/5	w



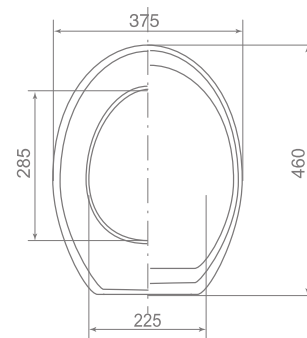
AQUAROC

2
YEARS

- polypropylene plastic 1,2 kg
- hinges and screws in nylon

white

Reference	EAN Code	Packaging	Boxed Qty	
21070001	3375539051524	Film	01/10	w



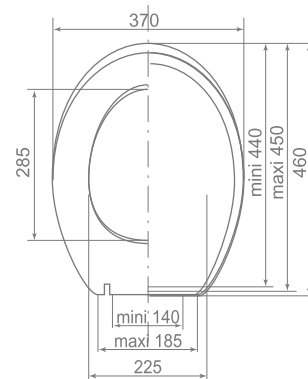
PREMIER / PRIMO

2
YEARS

- polypropylene plastic 0,6 kg
- hinges and screws in nylon

white

Reference	EAN Code	Packaging	Boxed Qty	
21400001	3375536033912	Film	01/10	w

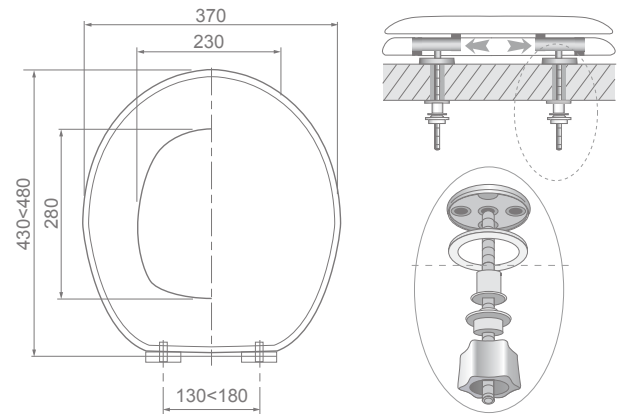
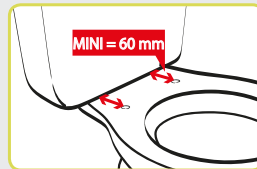




DIPLOMAT

Sleek, contemporary design!

- **MATERIAL:** compressed wood
- **STAINLESS HINGES:** anti-corrosion **soft close**
- **FINISH:** acrylic
- **TESTED FOR 20,000 CYCLES:** open/close cycles
- **ADAPTABLE:** universal shape
- **WEIGHT:** 3.4 kg
- **GUARANTEE:** 2 years



DIPLOMAT TAUPE SOFT CLOSE

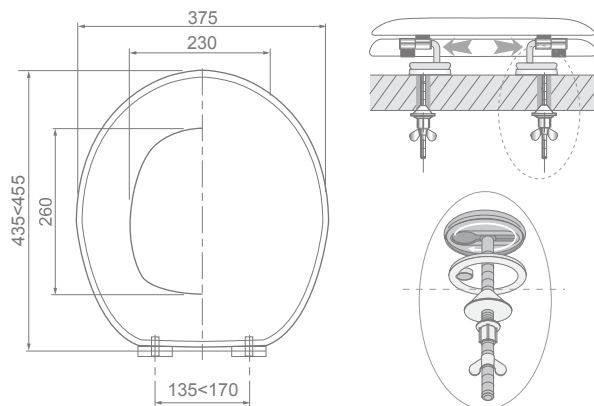
2
YEARS



Reference	EAN Code	Packaging	Boxed Qty
20719923	3375537198467	Box	01/4 w

Recommended Accessories p. 59





COLORS LINE TOILET SEATS

Bold two-tone design!



- **MATERIAL:** compressed wood
- **STAINLESS HINGES:** anti-corrosion
- **ADAPTABLE:** universal shape
- **TESTED FOR 20,000 CYCLES:** open/close cycles
- **WEIGHT:** 2.7 kg
- **GUARANTEE:** 2 years

BI-COLOUR

2
YEARS

Matt light grey / dark grey

Reference	EAN Code	Packaging	Boxed Qty
20719739	3375537196661	Box	01/4 w

Recommended Accessories p. 59





COLORS LINE TOILET SEATS

Dare to be colourful!

- **MATERIAL:** compressed wood
- **STAINLESS HINGES:** anti-corrosion
- **ADAPTABLE:** universal shape
- **TESTED FOR 20,000 CYCLES:** open/close cycles
- **WEIGHT:** 2.7 kg
- **GUARANTEE:** 2 years



COLOR LINE

2
YEARS

raspberry



Reference	EAN Code	Packaging	Boxed Qty	
20718778	3375537187256	Box	01/4	w

Recommended Accessories p. 59 

turquoise



Reference	EAN Code	Packaging	Boxed Qty	
20718777	3375537187249	Box	01/4	w

Recommended Accessories p. 59 

mat light grey



mat

Reference	EAN Code	Packaging	Boxed Qty	
20717953	3375537179121	Box	01/4	w

Recommended Accessories p. 59 

mat mushroom



mat

Reference	EAN Code	Packaging	Boxed Qty	
20717957	3375537179169	Box	01/4	w

Recommended Accessories p. 59 

plum



Reference	EAN Code	Packaging	Boxed Qty	
20717955	3375537179145	Box	01/4	w

Accessoires recommandés p.59 

aniseed green



Reference	EAN Code	Packaging	Boxed Qty	
20717950	3375537179091	Box	01/4	w

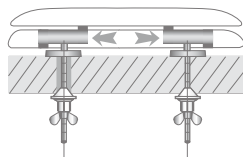
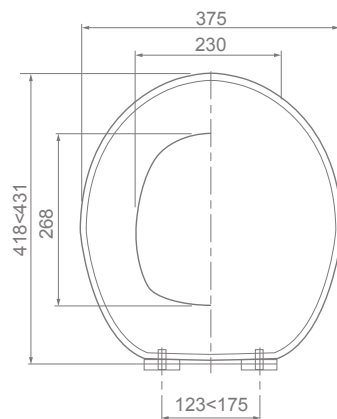
Recommended Accessories p. 59 

chocolate



Reference	EAN Code	Packaging	Boxed Qty	
20717956	3375537179152	Box	01/4	w

Recommended Accessories p. 59 



VAN SOFT CLOSE

2
YEARS

Reference	EAN Code	Packaging	Boxed Qty
20720050	3375537199723	Box	01/4 w

Recommended Accessories p. 59 

COLA SOFT CLOSE

2
YEARS

Reference	EAN Code	Packaging	Boxed Qty
20720051	3375537199730	Box	01/4 w

Recommended Accessories p. 59  

WOOD SOFT CLOSE

Style and comfort!

Vintage Spirit!

- **MATERIAL:** compressed wood
- **HINGES:** 304 stainless steel **soft close**
- **ADAPTABLE:** universal shape
- **TESTED FOR 20,000 CYCLES:** open/close cycle
- **WEIGHT:** 2.7 kg
- **GUARANTEE:** 2 years

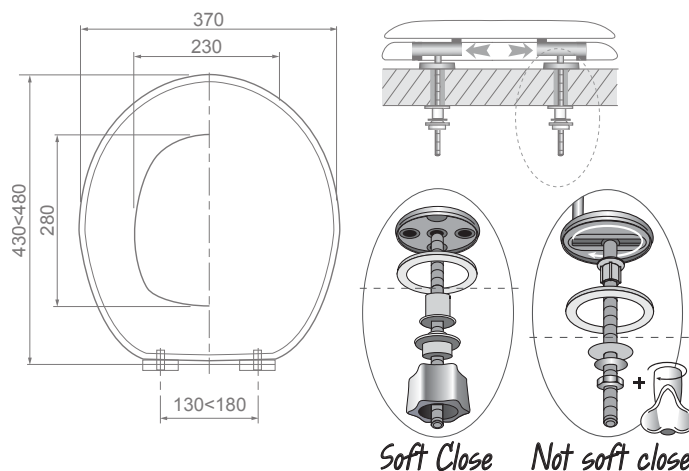
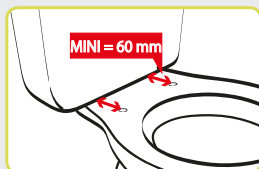




DIPLOMAT

Sleek, contemporary design!

- **MATERIAL:** compressed wood
- **STAINLESS HINGES:** anti-corrosion **soft close**
- **FINISH:** acrylic
- **TESTED FOR 20,000 CYCLES:** open/close cycles
- **ADAPTABLE:** universal shape
- **WEIGHT:** 3.4 kg
- **GUARANTEE:** 2 years



DIPLOMAT ZEN SOFT CLOSE

2
YEARS

Reference	EAN Code	Packaging	Boxed Qty
20719925	3375537198481	Box	01/4 w

Recommended Accessories p. 59 ○



DIPLOMAT PANTHER SOFT CLOSE

2
YEARS

Reference	EAN Code	Packaging	Boxed Qty
20721502	3375537214310	Box	01/4 w

Recommended Accessories p. 59 ●



DIPLOMAT PASTELS SOFT CLOSE

2
YEARS

Reference	EAN Code	Packaging	Boxed Qty
20721955	3375537218745	Box	01/4 w

Recommended Accessories p. 59 ●

DIPLOMAT MALMO

2
YEARS

Reference	EAN Code	Packaging	Boxed Qty
20721907	3375537218264	Box	01/4 w

Recommended Accessories p. 59 ○

DIPLOMAT DEER SOFT CLOSE

2
YEARS

Reference	EAN Code	Packaging	Boxed Qty
20721956	3375537218752	Box	01/4 w

Recommended Accessories p. 59 ●

DIPLOMAT YELLOW

2
YEARS

Reference	EAN Code	Packaging	Boxed Qty
20721908	3375537218271	Box	01/4 w

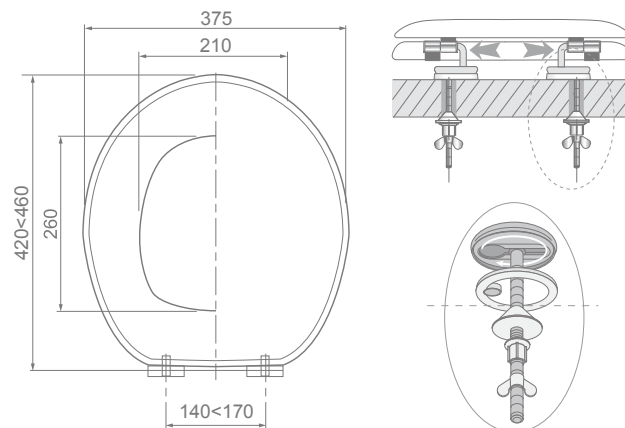
Recommended Accessories p. 59 ●



WOOD

Decorative & trendy!

- **MATERIAL:** compressed wood
- **STAINLESS STEEL HINGES:** will not rust
- **ADAPTABLE:** fits standard pans
- **TESTED FOR 20,000 CYCLES:** open / closes cycles
- **WEIGHT:** 2,7 kg
- **GUARANTEE:** 2 years



ORIGAMI

2
YEARS

Reference	EAN Code	Packaging	Boxed Qty
20721501	3375537214303	Box	01/4

Recommended Accessories p. 59 ☐ ☒



FISHING HUT

2
YEARS

Reference	EAN Code	Packaging	Boxed Qty
20720369	3375537202942	Box	01/4

Recommended Accessories p. 59 ☒



KID COLORS

2
YEARS

Reference	EAN Code	Packaging	Boxed Qty
20718770	3375537187171	Box	01/4 w

Recommended Accessories p. 59



VEGETAL

2
YEARS

Reference	EAN Code	Packaging	Boxed Qty
20717959	3375537179183	Box	01/4 w

Recommended Accessories p. 59



DANDELION

2
YEARS

Reference	EAN Code	Packaging	Boxed Qty
20720372	3375537202973	Box	01/4 w

Recommended Accessories p. 59

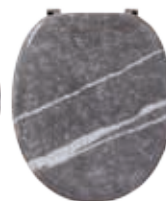


MARBLE EFFECT

2
YEARS

Reference	EAN Code	Packaging	Boxed Qty
20720370	3375537202959	Box	01/4 w

Recommended Accessories p. 59



PLAY/PAUSE

2
YEARS

Reference	EAN Code	Packaging	Boxed Qty
20720538	3375537204618	Box	01/4 w

Recommended Accessories p. 59



JAPANESE FLOWER

2
YEARS

Reference	EAN Code	Packaging	Boxed Qty
20719127	3375537190560	Box	01/4 w

Recommended Accessories p. 59



PARIS

2
YEARS

Reference	EAN Code	Packaging	Boxed Qty
20719125	3375537190546	Box	01/4 w

Recommended Accessories p. 59 ● ●



LONDON

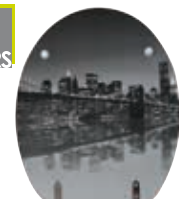
2
YEARS

Reference	EAN Code	Packaging	Boxed Qty
20718562	3375537185115	Box	01/4 w

Recommended Accessories p. 59 ● ●



BROOKLYN BRIDGE

2
YEARS

Reference	EAN Code	Packaging	Boxed Qty
20719126	3375537190553	Box	01/4 w

Recommended Accessories p. 59 ●



CUBA COLOR

2
YEARS

Reference	EAN Code	Packaging	Boxed Qty
20718772	3375537187195	Box	01/4 w

Recommended Accessories p. 59 ●



CITY

2
YEARS

Reference	EAN Code	Packaging	Boxed Qty
20717962	3375537179213	Box	01/4 w

Recommended Accessories p. 59 ●



ROAD

2
YEARS

Reference	EAN Code	Packaging	Boxed Qty
20719123	3375537190522	Box	01/4 w

Recommended Accessories p. 59 ●



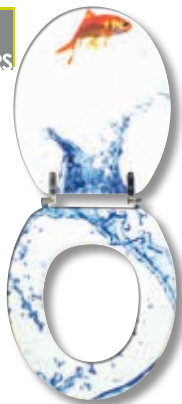
HOLIDAY BEACH

2
YEARS

Reference	EAN Code	Packaging	Boxed Qty
20719122	3375537190515	Box	01/4 w

Recommended Accessories p. 59 

AQUARIUM

2
YEARS

Reference	EAN Code	Packaging	Boxed Qty
20717963	3375537179220	Box	01/4 w

Recommended Accessories p. 59 

TIGER

2
YEARS

Reference	EAN Code	Packaging	Boxed Qty
20719131	3375537190607	Box	01/4 w

Recommended Accessories p. 59 

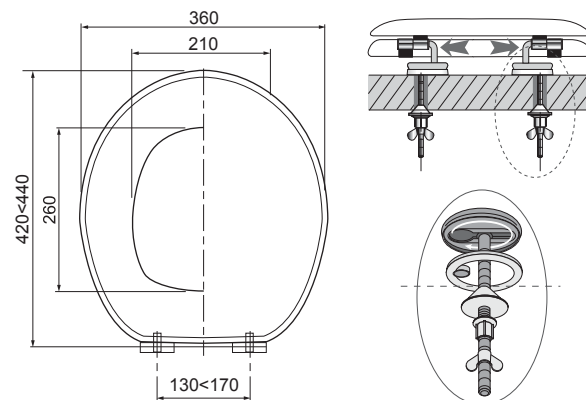
3D





RESIN

- MATERIAL:** resin
- STAINLESS STEEL HINGES:** will not rust
- ADAPTABLE:** fits standard pans
- TESTED FOR 20,000 CYCLES:** open / closes cycles
- WEIGHT:** 3,7 kg
- GUARANTEE:** 2 years



ARTWORK

2
YEARS



Reference	EAN Code	Packaging	Boxed Qty
20717968	3375537179275	Box	01/4 w

Recommended Accessories p. 59 ☐ ☒

NATURE

2
YEARS



Reference	EAN Code	Packaging	Boxed Qty
20717970	3375537179299	Box	01/4 w

Recommended Accessories p. 59 ☐ ☒

MÉTAL

2
YEARS



Reference	EAN Code	Packaging	Boxed Qty
20719128	3375537190577	Box	01/4 w

Recommended Accessories p. 59 ☐ ☒

PICS

2
YEARS



Reference	EAN Code	Packaging	Boxed Qty
20718841	3375537187874	Box	01/4 w

Recommended Accessories p. 59 ☐ ☒



COORDINATED ACCESSORIES

plum

	Reference	EAN Code	Packaging	
1	20719214	3375537191437	Film	w
2	20719222	3375537191512	Film	w
3	20719229	3375537191581	Film	w

aniseed green

	Reference	EAN Code	Packaging	
1	20719216	3375537191451	Film	w
2	20719223	3375537191529	Film	w
3	20719230	3375537191598	Film	w

chocolate

	Reference	EAN Code	Packaging	
1	20719211	3375537191406	Film	w
2	20719219	3375537191482	Film	w
3	20719226	3375537191550	Film	w

azure

	Reference	EAN Code	Packaging	
1	20719212	3375537191413	Film	w
2	20719220	3375537191499	Film	w
3	20719227	3375537191567	Film	w

raspberry

	Reference	EAN Code	Packaging	
1	20719210	3375537191390	Film	w
2	20719218	3375537191475	Film	w
3	20719225	3375537191543	Film	w

mushroom

	Reference	EAN Code	Packaging	
1	20719209	3375537191383	Film	w
2	20719217	3375537191468	Film	w
3	20719224	3375537191536	Film	w

COORDINATED ACCESSORIES

Accessories that match your seat colour!

■ **MATERIAL:** thermoplastic synthetic resin.

■ **CLEVER DESIGN:** bin liner lifts right out and a retaining ring holds the bag in place.

■ **CONVENIENT:** curved handle for a better grip.

■ **EASY:** change the toilet roll with a single click!

■ **CLEVER DESIGN:** resists soiling.



black

	Reference	EAN Code	Packaging	
1	20719213	3375537191420	Film	w
2	20719221	3375537191505	Film	w
3	20719228	3375537191574	Film	w

white

	Reference	EAN Code	Packaging	
1	20719215	3375537191444	Film	w
2	25190001	3375536039280	Film	w
3	25180001	3375536039228	Film	w





TOILET DISPENSER SET

with toilet brush
and decorative stickers

- **MATERIAL:** compressed wood
- **CUSTOMIZABLE:** decorative stickers included in the pack
- **CLEVER DESIGN:** black handle and brush (anti-soiling)
- **CONVENIENT:** curved handle for a better grip
- Stores extra toilet paper



2
YEARS

TOILET DISPENSER SET + 4 STICKERS

Reference	EAN Code	Packaging	Boxed Qty	
20720985	3375537209101	Box	01/04	w



2
YEARS

TOILET DISPENSER SET + 6 STICKERS

Reference	EAN Code	Packaging	Boxed Qty	
20721609	3375537215386	Box	01/04	w

HINGES



Reference	EAN Code	Packaging	Boxed Qty	
FDRI1WH	-	-	-	w

HINGES



Reference	EAN Code	Packaging	Boxed Qty	
FDRI1SS	-	-	-	w

TOILET BRUSH



Reference	EAN Code	Packaging	Boxed Qty	
20720514	3375537204373	Sac	01/35	w

PAN CONNECTORS



How to choose your pan connectors?

TYPE OF WC PIPES:



Rigid



Flexible



Extendable

OUTLET TYPE:



To be glued



Push-fit

EXTENDABLE ELBOW WITH FINS



- connection to drainage system:
dia. 93 / dia. 100 / dia. 110mm to be glued
- push fit D110
- L 230mm < 390mm



with metal reinforcement without spigot

Reference	EAN Code	Packaging	Boxed Qty	
70718878	3375537188185	Film	16	w

40"



with metal reinforcement with spigot

Reference	EAN Code	Packaging	Boxed Qty	
70718879	3375537188192	Film	16	M

EXTENDABLE PAN CONNECTOR WITH FINS



- connection to drainage system:
dia. 93 / dia. 100 / dia. 110mm to be glued
dia. 110 for push fit
- reinforced metal thread
- L 300mm < 670mm

with metal reinforcement

Reference	EAN Code	Packaging	Boxed Qty	
71260101	3375537142224	Film	20	w

EXTENDABLE PAN CONNECTOR WITH FINS



- connection to drainage system:
dia. 95 to 110mm only push fit
- reinforced metal thread
- L 290mm < 640mm

with metal reinforcement

Reference	EAN Code	Packaging	Boxed Qty	
70975042	4620016492635	Film	20	w

EXTENDABLE PIPE WITH FINS



- connection to drainage system:
dia. 93 / dia. 100 / dia. 110mm
- plastic thread
- L 230mm < 550mm

without metal reinforcement

Reference	EAN Code	Packaging	Boxed Qty	
71230000	3375539070389	Film	28	w

FLEXIBLE EXTRA SHORT VERSION

- connection to drainage system:
dia. 104 / dia. 110mm
- L 215 < 320mm



without metal reinforcement

Reference	EAN Code	Packaging	Boxed Qty	
71080201	3375539050046	Film	20	W

FLEXIBLE SHORT VERSION

- connection to drainage system:
dia. 104 / dia. 110mm
- L 240mm < 390mm



without metal reinforcement

Reference	EAN Code	Packaging	Boxed Qty	
71080101	3375536038986	Film	15	M

FLEXIBLE LONG VERSION

- connection to drainage system:
dia. 104 / dia. 110mm
- L 320mm < 540mm



without metal reinforcement

Reference	EAN Code	Packaging	Boxed Qty	
71080001	3375536038986	Film	12	W

90° PAN CONNECTOR WITH FINS



- connection to drainage system:
dia. 104mm < dia. 110mm

Reference	EAN Code	Packaging	Boxed Qty	
71240001	3375537130672	Bulk	16	W

90° PAN CONNECTOR WITH FINS AND SPIGOT



- connection to drainage system:
dia. 104mm < dia. 110mm
- washing machine spigot dia. 40mm

Reference	EAN Code	Packaging	Boxed Qty	
71240101	3375537130689	Bulk	20	W

SWAN NECK PAN CONNECTOR WITH FINS



- connection to drainage system:
dia. 104mm < dia. 110mm

Reference	EAN Code	Packaging	Boxed Qty	
71240201	3375537130696	Bulk	16	W

PAN CONNECTOR EXTENSION PIECE WITH FINS



- connection to drainage system:
dia. 104mm < dia. 110mm

Reference	EAN Code	Packaging	Boxed Qty	
71250001	3375537130702	Bulk	30	M

90° PAN CONNECTOR WITH FINS



- connection to drainage system:
dia. 85mm < dia. 110mm

Reference	EAN Code	Packaging	Boxed Qty	
70719117	5017134106077	Bag	12	W

ANGLED PAN CONNECTOR WITH FINS



- connection to drainage system:
14° angled connection
- pan outlet dia. 85mm < dia. 110mm
- drain connection: push fit
dia. 100mm < dia. 110mm

Reference	EAN Code	Packaging	Boxed Qty	
70719941	5017134106091	Bag	30	w

STRAIGHT PAN CONNECTOR WITH FINS



- connection to drainage system:
- pan outlet dia. 85mm < dia. 110mm
- drain connection: push fit
dia. 100mm < dia. 110mm

Reference	EAN Code	Packaging	Boxed Qty	
70719116	5017138106114	Bag	30	M

PAN OUTLET



- connection to drainage system:
- pan outlet dia. 100mm < dia. 105mm
- drainage connection to
dia. 100mm to 110mm

offset outlet with fins

Reference	EAN Code	Packaging	Boxed Qty	
RA374	3375530086815	Bulk	60	w



straight outlet with fins

Reference	EAN Code	Packaging	Boxed Qty	
RA372	3375530086419	Bulk	60	w

HYDROTHERAPY



How to

SHOWER COLUMNS



Switch
column to connect to existing
taps thanks to a diverter



Touch
column with mechanical mixer
tap



Comfort
column with thermostatic mixer
tap



Adjustable wall bracket
or adjustable shower head

OVERHEAD SHOWERS



Water saving



Brass ball joint



Anti-limescale
Easy clean

choose the right hydrotherapy solution?

HANDSHOWERS:



Water saving
(aerator)



Efficient, water-saving
jet (aerator)



Stop jet pause function



Number of jets



LED

HOSES:



Size



Stretch



Anti-twist



Strength

SHOWER SET:



DUO
(handshower + hose)



TRIO
(handshower + hose
+ handshower bracket)

Hydrotherapy concept



MARKETING TOOLS

The merchandising Kit includes:

- 4 headers
- 5 vertical banners
- fastening systems

Description	Reference	EAN Code	Packaging
Hydrotherapy merchandising kit (3 to 4 m)	90721077	3375537209989	Bulk
Set of labels for hydrotherapy boxes FR/NL/IT	90721078	3375537209996	Bulk

1 Shower Column Concept



2 Overhead shower concept

MARKETING TOOLS

1 SHOWER COLUMN CONCEPT

Includes:

- 3 wooden racks (L = 31 cm - H = 118 cm)
- 3 LED lighting strips

Description	Reference	EAN Code
Set of 3 boards (1 meter) + 1 rail (1 meter) + 3 Wirquin logos	90721268	3375537211975
Set of LEDs for 3 shower columns	90721583	3375537215126
Communication kit ES	90721663	337553215911
Communication Kit PT	90721664	337553215928

2 OVERHEAD SHOWER CONCEPT

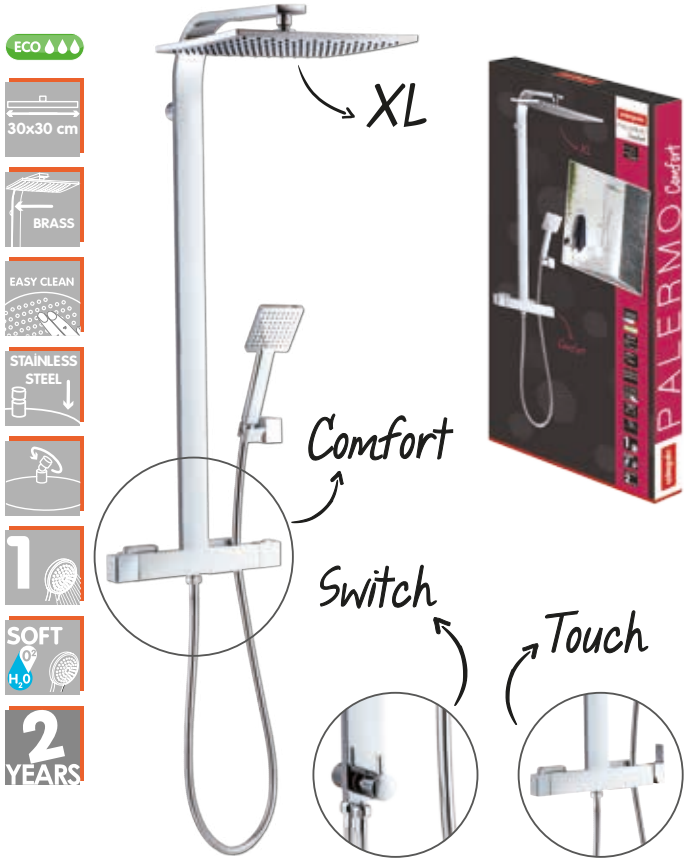
Includes:

- 2 vertical banners
- 1 header (for 1 linear m)

Description	Reference	EAN Code
DIVA overhead shower concept Kit for 1 linear m (fastening systems included)	90721269	3375537211982



- Perfect for LARGE SPACES
- LARGE OVERHEAD SHOWER, anti-limescale, 30 x 30 cm in chromed stainless steel and ABS, very gentle, water-efficient jet
- CHROMED BRASS column (50 x 10 mm)
- Very attractive SHINY HOSE featuring a tight weave (1.5 m)
- SOFT 1-JET HANDSHOWER: efficient, water-saving jet (aerator)
- CERAMIC DISC DIVERTERS
- H = 930 mm, D = 565 mm



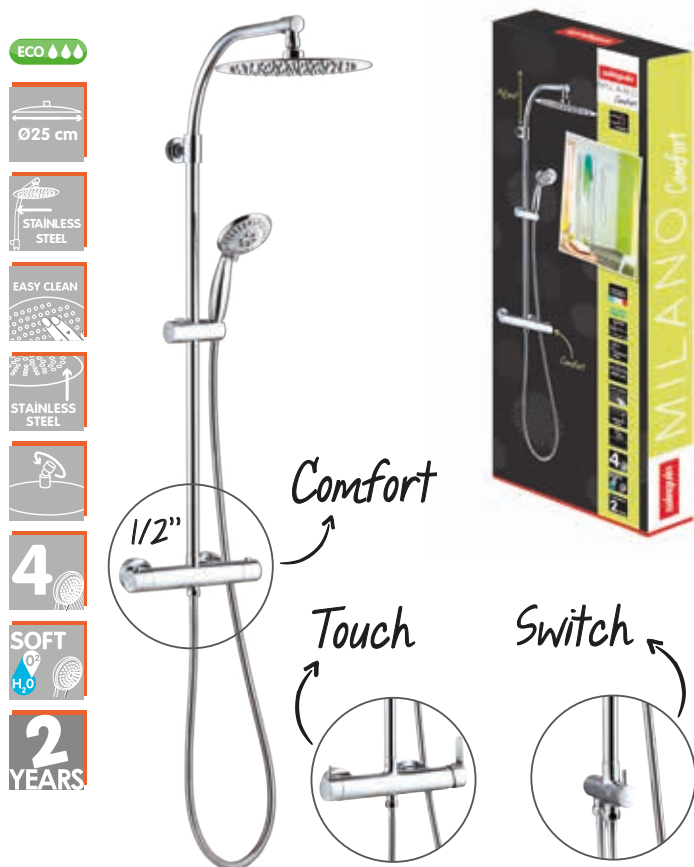
PALERMO

- compatible with all hot water systems thanks to the Vernet thermostatic cartridge, dia. 35 mm, manufactured in France

PALERMO COMFORT				
Reference	EAN Code	Packaging	Boxed Qty	
60721391	3375537213207	Box	01/2	w

PALERMO TOUCH				
Reference	EAN Code	Packaging	Boxed Qty	
60721390	3375537213191	Box	01/2	w

PALERMO SWITCH				
Reference	EAN Code	Packaging	Boxed Qty	
60721441	3375537213702	Box	01/2	w



MILANO

MILANO COMFORT

- compatible with all hot water systems thanks to the Vernet thermostatic cartridge, dia. 35 mm, manufactured in France

Reference	EAN Code	Packaging	Boxed Qty	
60721389	3375537213184	Box	01/2	w

MILANO TOUCH

Reference	EAN Code	Packaging	Boxed Qty	
60721388	3375537213177	Box	01/2	w

MILANO SWITCH

Reference	EAN Code	Packaging	Boxed Qty	
60721437	3375537213665	Box	01/2	w

MILANO

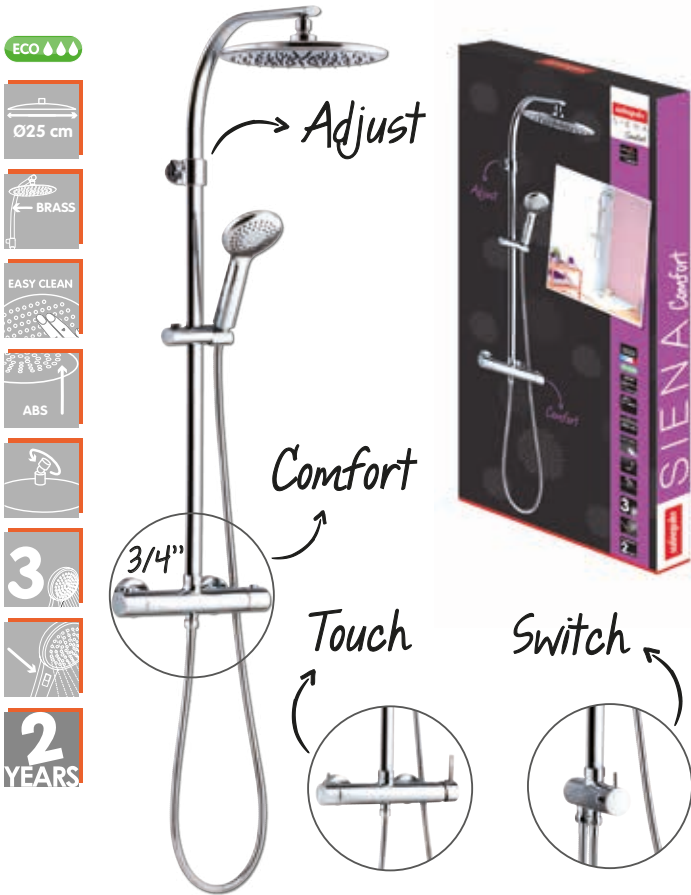


- Overhead shower HEIGHT-ADJUSTABLE after installation (telescopic bar, DIA. 23/20.6)
- MARINE STAINLESS STEEL column
- Very attractive SHINY HOSE featuring a tight weave (1.5 m)
- SOFT 4-JET HANDSHOWER: efficient, water-saving jet (aerator)
- CERAMIC DISC DIVERTERS
- H = 960<1200 mm, D = 540 mm

SIENA



- PERFECT FOR RENOVATIONS thanks to the height-adjustable wall bracket
- CHROMED BRASS column (30 x 15 mm)
- Very attractive SHINY HOSE featuring a tight weave (1.5 m)
- 3-JET HANDSHOWER: change jet settings at the push of a button
- CERAMIC DISC DIVERTERS
- H = 950 mm, D = 530 mm



SIENA

SIENA COMFORT

- compatible with all hot water systems thanks to the Vernet thermostatic cartridge, dia. 35 mm, manufactured in France

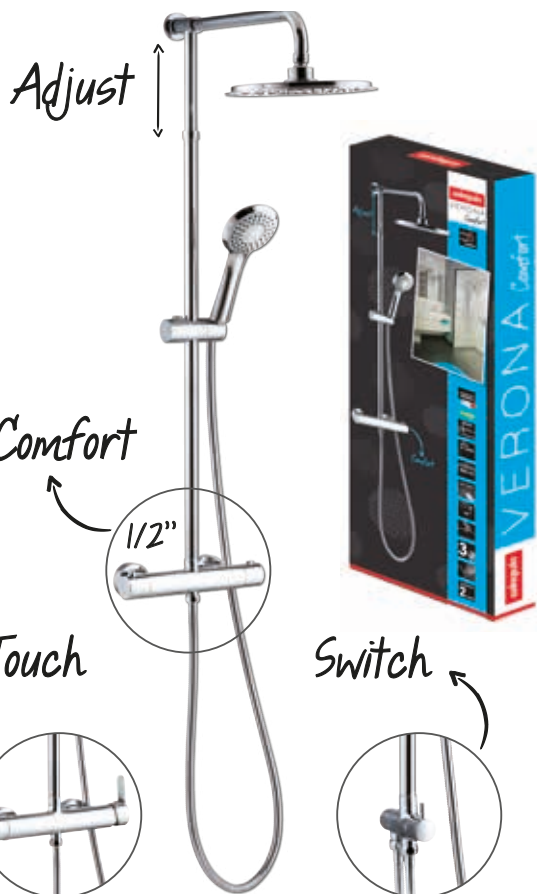
Reference	EAN Code	Packaging	Boxed Qty	
60721387	3375537213160	Box	01/2	w

SIENA TOUCH

Reference	EAN Code	Packaging	Boxed Qty	
60721386	3375537213153	Box	01/2	w

SIENA SWITCH

Reference	EAN Code	Packaging	Boxed Qty	
60721385	3375537213146	Box	01/2	w

ECO  Ø23 cm BRASS EASY CLEAN ABS 3 2 YEARS**VERONA****VERONA COMFORT**

- compatible with all hot water systems thanks to the Vernet thermostatic cartridge, dia. 35 mm, manufactured in France

Reference	EAN Code	Packaging	Boxed Qty	
60721384	3375537213139	Box	01/2	w

VERONA TOUCH

Reference	EAN Code	Packaging	Boxed Qty	
60721383	3375537213122	Box	01/2	w

VERONA SWITCH

Reference	EAN Code	Packaging	Boxed Qty	
60721382	3375537213115	Box	01/2	w

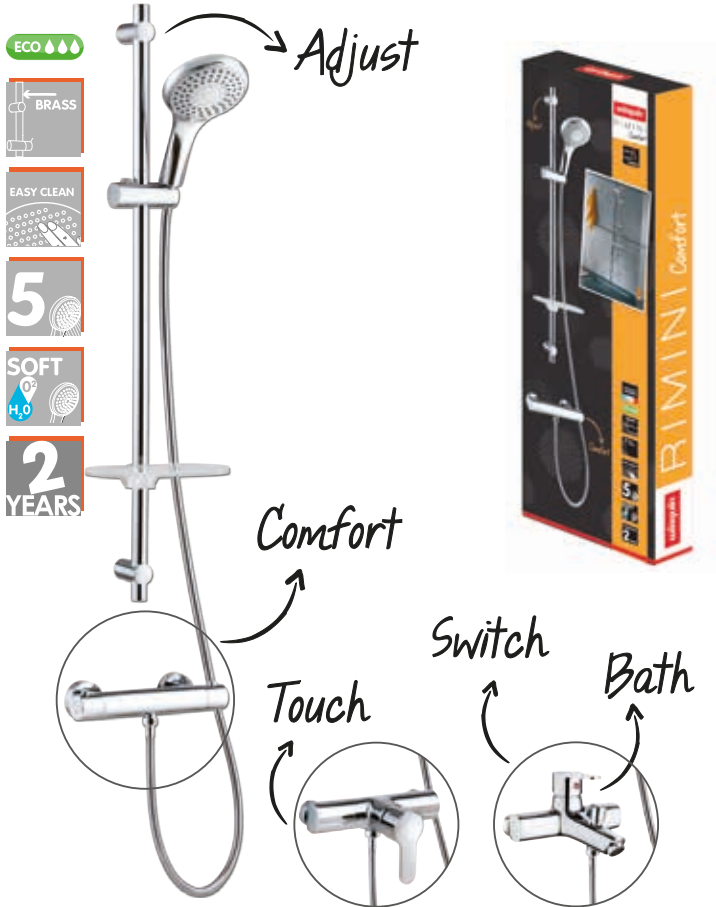
VERONA

- **HEIGHT ADJUSTABLE** during installation (telescopic bar DIA. 23/20.6)
- **CHROMED BRASS** column
- **Very attractive SHINY HOSE** featuring a tight weave (1.5 m)
- **3-JET HANDSHOWER:** change jet settings at the push of a button
- **CERAMIC DISC DIVERTERS**
- **H = 800<1130 mm, D = 540 mm**

RIMINI



- PERFECT FOR SMALL SPACES
- CHROMED BRASS bar (dia. 25 mm)
- Very attractive SHINY HOSE featuring a tight weave (1.5 m)
- Large SOFT 5-JET handshower (dia. 13 cm) that can serve as an effective, water-saving overhead shower (aerator)
- Shampoo and/or soap holder
- Brass mixer tap
- H = 880 mm



RIMINI

RIMINI COMFORT

- compatible with all hot water systems thanks to the Vernet thermostatic cartridge, dia. 35 mm, manufactured in France

Reference	EAN Code	Packaging	Boxed Qty	
60721393	3375537213221	Box	01/2	w

RIMINI TOUCH

Reference	EAN Code	Packaging	Boxed Qty	
60721392	3375537213214	Box	01/2	w

RIMINI SWITCH

Reference	EAN Code	Packaging	Boxed Qty	
60721438	3375537213672	Box	01/2	w

ECO 

Ø20 cm

STAINLESS
STEEL

EASY CLEAN

ABS

3

SOFT
H₂O2
YEARS*Adjust*

1/2"

*Switch***VENEZIA SWITCH**

- column connects to existing taps thanks to a 50 cm Shiny hose in chromed stainless steel
- column with brass push-pull diverter; dia. 32 mm
- handshower connects at the rear and hose connects in the front
- aftersales: push-pull diverter 60721394



Reference	EAN Code	Packaging	Boxed Qty	
60721381	3375537213108	Box	01/4	w

VENEZIA

- **PERFECT FOR RENOVATIONS** thanks to the height-adjustable wall bracket
- **CHROMED STAINLESS STEEL** column (dia. 20.6 mm)
- **Very attractive SHINY HOSE** featuring a tight weave (1.5 m)
- **SOFT 5-JET HANDSHOWER:** efficient and water-saving (aerator)
- **H = 950 mm, D = 450 mm**



- PERFECT FOR RENOVATIONS thanks to the 2 brackets that hide the old taps (centre-to-centre distance 150 mm)
- ALUMINIUM column
- ALUMINIUM EFFECT PVC HOSE (1.5 m)
- 1-JET HANDSHOWER: water-saving (12L/min)
- H = 1320 mm



LOVE&O CITY
- adjustable shower head with anti-limescale nozzles



column with mechanical mixer tap

Reference	EAN Code	Packaging	Boxed Qty	
60720083	3375537200054	Box	01/26	w



column with thermostatic mixer tap

Reference	EAN Code	Packaging	Boxed Qty	
60720084	3375537200061	Box	01/26	w



3/4"



OVALYS

- oval column (30 × 15mm) in chromed brass, height: 93 cm
- brass diverter; dia. 32 mm with ceramic discs
- wall brackets adjustable in height and depth
- anti-limescale shower head, dia. 20 cm in chromed ABS
- 3-jet handshower; dia. 10 cm with height-adjustable bracket
- chromed stainless steel hoses:
 - 1.50 m for supplying the handshower
 - 0.30 m for connecting the shower to the taps
 - 1.00 m for connecting the bathtub to the taps



3/4"



OLA

- chromed brass column (dia. 23 mm), height: 83 cm
- brass diverter; dia. 32 mm with ceramic discs
- wall brackets adjustable in height and depth
- anti-limescale shower head, 25 × 16 cm in chromed ABS
- 1-jet handshower; dia. 3 cm with height-adjustable bracket
- chromed stainless steel hoses:
 - 1.50 m for supplying the handshower
 - 0.30 m for connecting the shower to the taps
 - 0.70 m for connecting the bathtub to the taps

Reference

68320001

EAN Code

3375537159499

Packaging

Box

Boxed Qty

01/4

w

Reference

68250001

EAN Code

3375537126095

Packaging

Box

Boxed Qty

01/4

w



TANGO

- chromed stainless steel column (dia. 22 mm), height: 90 cm
- push-pull diverter (ABS), thermostatic taps
- wall brackets adjustable in height and depth
- anti-limescale shower head, dia. 15 cm, in chromed ABS
- 3-jet handshower; dia. 7 cm with height-adjustable bracket
- chromed stainless steel hose:
 - 1.50 m for supplying the handshower
 - 0.50 m for connecting to the taps

Reference	EAN Code	Packaging	Boxed Qty	
68270001	3375537135158	Box	01/5	w



FLAMENCO

- chromed stainless steel column (dia. 22 mm), height: 90 cm
- brass diverter
- wall brackets adjustable in height and depth
- anti-limescale shower head, dia. 20 cm, in chromed ABS
- 3-jet handshower; dia. 7 cm with stop-jet and height-adjustable bracket
- chromed stainless steel hose:
 - 1.50 m for supplying the handshower
 - 0.50 m for connecting to the taps

Reference	EAN Code	Packaging	Boxed Qty	
60718067	3375537180264	Box	01/5	w



XL



PALERMO



30 x 30 cm, stainless steel

1/2"



Reference	EAN Code	Packaging	Boxed Qty	
60720948	3375537208746	Box	01/5	w

TORINO



Dia. 30 cm, stainless steel

1/2"



Reference	EAN Code	Packaging	Boxed Qty	
60721114	3375537210374	Box	01/5	w

DIVA



- HIGH QUALITY
- WATER SAVING
- EASY CLEAN thanks to the anti-limescale nozzles



Design



MILANO



22 cm, stainless steel



Reference	EAN Code	Packaging	Boxed Qty	
60720949	3375537208753	Box	01/4	w

NAPOLI



22 cm, stainless steel



Reference	EAN Code	Packaging	Boxed Qty	
60720950	3375537208760	Box	01/4	w



25 cm, stainless steel



Reference	EAN Code	Packaging	Boxed Qty	
60720951	3375537208777	Box	01/4	w



25 cm, stainless steel



Reference	EAN Code	Packaging	Boxed Qty	
60720952	3375537208784	Box	01/4	w



Classic



GENOVA

20 x 20 cm, ABS



Référence	Gencod	Emballage	PCB/Colisage	w
60720945	3375537208715	Box	01/5	

VERONA

Dia. 23 cm, ABS



Reference	EAN Code	Packaging	Boxed Qty	w
60720946	3375537208722	Box	01/10	

VENEZIA

Dia. 20 cm, ABS



Reference	EAN Code	Packaging	Boxed Qty	w
60720944	3375537208708	Box	01/5	

FIRENZE

22 x 22 cm, ABS



Reference	EAN Code	Packaging	Boxed Qty	w
60720947	3375537208739	Box	01/10	

OVALYS V2

Dia. 20 cm, ABS



Reference	EAN Code	Packaging	Boxed Qty	w
60721087	3375537210084	Box	01/15	



ROUND 1/2" MECHANICAL MIXER TAP



- brass mixer tap / built-in ceramic diverter

Reference	EAN Code	Packaging	Boxed Qty	
60721398	3375537213276	Box	01/-	w

OVAL 3/4" MECHANICAL MIXER TAP



- brass mixer tap / built-in ceramic diverter

Reference	EAN Code	Packaging	Boxed Qty	
60721400	3375537213290	Box	01/-	w

SQUARE MECHANICAL MIXER TAP, SPECIFIC



- brass mixer tap / built-in ceramic diverter

Reference	EAN Code	Packaging	Boxed Qty	
60721402	3375537213313	Box	01/-	w

ROUND MECHANICAL MIXER TAP, BOTTOM OUTLET



- brass mixer tap

Reference	EAN Code	Packaging	Boxed Qty	
60721404	3375537213337	Box	01/-	w

ROUND 1/2" THERMOSTATIC MIXER TAP



- brass mixer tap / built-in ceramic diverter

Reference	EAN Code	Packaging	Boxed Qty	
60721399	3375537213283	Box	01/-	w

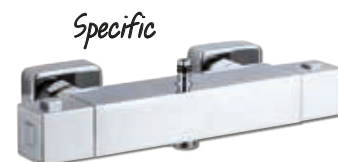
OVAL 3/4" THERMOSTATIC MIXER TAP



- brass mixer tap / built-in ceramic diverter

Reference	EAN Code	Packaging	Boxed Qty	
60721401	3375537213306	Box	01/-	w

SQUARE THERMOSTATIC MIXER TAP, SPECIFIC



- brass mixer tap / built-in ceramic diverter

Reference	EAN Code	Packaging	Boxed Qty	
60721403	3375537213320	Box	01/-	w

ROUND THERMOSTATIC MIXER TAP, BOTTOM OUTLET



- brass mixer tap

Reference	EAN Code	Packaging	Boxed Qty	
60721405	3375537213344	Box	01/-	w

FLAMENCO PUSH-PULL DIVERTER



- brass

Specific

Reference	EAN Code	Packaging	Boxed Qty
60721452	3375537213818	Blister	01/10 w

VENEZIA PUSH-PULL DIVERTER



- brass

1/2"

Reference	EAN Code	Packaging	Boxed Qty
60721394	3375537213238	Blister	01/10 w

OVALYS OLA ROUND ROTARY DIVERTER



- brass with ceramic discs
- dia. 32 mm

3/4"

Reference	EAN Code	Packaging	Boxed Qty
60721397	3375537213269	Blister	01/10 w

VERONA MILANO ROUND ROTARY DIVERTER



- brass with ceramic discs
- dia. 32 mm

1/2"

Reference	EAN Code	Packaging	Boxed Qty
60721395	3375537213245	Blister	01/10 w

SIENA OVAL ROTARY DIVERTER



- brass with ceramic discs
- 32 x 42 mm

3/4"

Reference	EAN Code	Packaging	Boxed Qty
60721396	3375537213252	Blister	01/10 w

VERNET THERMOSTATIC CARTRIDGE



- manufactured in France
- for Wirquin **thermostatic** mixer taps



Reference	EAN Code	Packaging	Boxed Qty
60721506	3375537214358	Blister	01/10 w

ON/OFF TAP

- for Wirquin **thermostatic** mixer taps

Reference	EAN Code	Packaging	Boxed Qty
60721517	3375537214471	Blister	01/10 w

ON/OFF TAP WITH DIVERTER

- for Wirquin **thermostatic** mixer taps

Reference	EAN Code	Packaging	Boxed Qty
60721518	3375537214488	Blister	01/10 w

ON/OFF TAP

- for Wirquin **mechanical** mixer taps

Reference	EAN Code	Packaging	Boxed Qty
60721515	3375537214457	Blister	01/10 w

ON/OFF TAP

- for Wirquin **mechanical** mixer taps

Reference	EAN Code	Packaging	Boxed Qty
60721536	3375537214662	Blister	01/10 w

TAP WITH DIVERTER

- for Wirquin **mechanical** mixer taps

Reference	EAN Code	Packaging	Boxed Qty
60721516	3375537214464	Blister	01/10 w



“URBAN” HANDSHOWERS

- CONTEMPORARY SHAPES
- ORIGINAL DESIGN



JOY



- 1 JET: fine rain
- dia. 10 cm

Reference	EAN Code	Packaging	Boxed Qty	
60720776	3375537207015	Freedom	01/16	w

LOOK



- 1 JET: fine rain
- SOFT aerator
- 6 x 13 cm

Reference	EAN Code	Packaging	Boxed Qty	
60720567	3375537204915	Freedom	01/16	w

CHIC



- 1 JET: fine rain
- SOFT aerator
- 8 x 10 cm

Reference	EAN Code	Packaging	Boxed Qty	
60720566	3375537204908	Freedom	01/16	w

ZEN

2
YEARSECO
H₂OSOFT
0²

STOP

4



- **4 JETS:** fine rain, dense rain, massage and fine rain/dense rain
- SOFT aerator
- **STOP-JET** dial setting
- dia. 10 cm

Reference	EAN Code	Packaging	Boxed Qty	
60720774	3375537206995	Freedom	01/16	w

EDEN

2
YEARSECO
H₂OSOFT
0²

STOP

5



- **5 JETS:** fine rain, dense rain, massage, fine rain/dense rain and fine rain/massage
- SOFT aerator
- **STOP-JET** dial setting
- dia. 10.5 cm

Reference	EAN Code	Packaging	Boxed Qty	
60720775	3375537207008	Freedom	01/16	w

PLAY

2
YEARSECO
H₂OSOFT
0²

1



- **1 JET:** fine rain
- SOFT aerator
- dia. 11 cm

Reference	EAN Code	Packaging	Boxed Qty	
60720778	3375537207039	Freedom	01/16	w

SUN

2
YEARSECO
H₂OSOFT
0²

1



- **1 JET:** fine rain
- SOFT aerator
- dia. 10 cm

Reference	EAN Code	Packaging	Boxed Qty	
60720777	3375537207022	Freedom	01/16	w



COMFORT

The SOFT aerator offers a gentle spray, whilst guaranteeing effectiveness and water conservation.

Dolce



“DOLCE” HANDSHOWERS

- CLASSIC SHAPES
- TRADITIONAL AND TIMELESS DESIGN

ANNA



- **1 JET:** fine rain
- dia. 7 cm

Reference	EAN Code	Packaging	Boxed Qty	
60720565	3375537204892	Freedom	01/16	w

BALIA



- **5 JETS:** fine rain, dense rain, massage, fine rain/dense rain and fine rain/ massage
- dia. 8 cm

Reference	EAN Code	Packaging	Boxed Qty	
60720769	3375537206940	Freedom	01/16	w

FLORA



- **1 JET:** fine rain
- **STOP-JET** on the handshower handle
- dia. 10 cm

Reference	EAN Code	Packaging	Boxed Qty	
60720770	3375537206957	Freedom	01/16	w

TILA

2
YEARS

- **2 JETS:** fine rain and massage
- SOFT aerator
- 11 x 11 cm
- Change sprays using the thumbwheel

Reference	EAN Code	Packaging	Boxed Qty	
60720564	3375537204885	Freedom	01/16	w

VIMAÏA

2
YEARS

- **5 JETS:** fine rain, dense rain, massage, fine rain/dense rain et fine rain/ massage
- dia. 10 cm

Reference	EAN Code	Packaging	Boxed Qty	
60720771	3375537206964	Freedom	1/16	w

PERLA

2
YEARS

- **3 JETS:** fine rain, dense rain and massage
- dia. 10 cm

Reference	EAN Code	Packaging	Boxed Qty	
60720562	3375537204861	Freedom	01/16	w

ROSA

2
YEARS

- **3 JETS:** fine rain, dense rain and massage
- dia. 12 cm

Reference	EAN Code	Packaging	Boxed Qty	
60720563	3375537204878	Freedom	01/16	w



WATER CONSERVATION

Water conservation is a real concern for the future. Showers/baths represent 60% of average household consumption.

The flow rate of the handshower is measured using the rain setting at 3 bars:

- ECO green: 6 to 12 L/min
- ECO yellow: 13 to 15 L/min

HAPPY



“HAPPY” HANDSHOWERS

- DYNAMIC SHAPES
- UNCOMMON DESIGN
- FUN FUNCTIONS (LED)

MAGGY



- **1 JET:** fine rain
- **SOFT** aerator
- dia. 10 cm

Reference	EAN Code	Packaging	Boxed Qty	
60720784	3375537207091	Freedom	01/16	w

CINDY



- **5 JETS:** fine rain, dense rain, massage, fine rain/dense rain and fine rain/massage
- **STOP-JET** on the handshower handle
- dia. 10 cm

Reference	EAN Code	Packaging	Boxed Qty	
60720782	3375537207077	Freedom	01/16	w

EMY



- **1 JET:** fine rain
- **SOFT** aerator
- dia. 10 cm

Reference	EAN Code	Packaging	Boxed Qty	
60720783	3375537207084	Freedom	01/16	w

EASY

2
YEARS

ECO

STOP

1



- **1 JET:** fine rain
- Easy **STOP-JET** (button on the handshower head)
- dia. 7 cm

Reference	EAN Code	Packaging	Boxed Qty	
60720779	3375537207046	Freedom	01/16	w

CRAZY

2
YEARS

ECO

1

LED



- **1 JET:** fine rain
- dia. 11 cm
- **LED FUNCTION**, perfect for young children, to make shower time fun

Reference	EAN Code	Packaging	Boxed Qty	
60720786	3375537207114	Freedom	01/16	w



JENNY

2
YEARS

ECO

3



- **3 JETS:** fine rain, massage and fine rain/massage
- dia. 10 cm
- Change sprays easily using the button on the handle

Reference	EAN Code	Packaging	Boxed Qty	
60720785	3375537207107	Freedom	01/16	w

ZIGGY

2
YEARS

ECO

STOP

5



- **5 JETS:** fine rain, dense rain, massage, fine rain/dense rain and fine rain/massage
- **STOP-JET** on the handshower handle
- dia. 12 cm

Reference	EAN Code	Packaging	Boxed Qty	
60720772	3375537206971	Freedom	01/16	w

STOP JET

Users can pause the water while shampooing.



Stop button on the handle



Stop function on the shower head

VIMAIA



- **5 JETS:** fine rain, dense rain, massage, fine rain/dense rain and fine rain/ massage
- dia. 10 cm

Reference	EAN Code	Packaging	Boxed Qty	
60720391	3375537203161	Blister	01/20	w

TUPAI



- **4 JETS:** fine rain, dense rain, massage and fine rain/massage
- dia. 13 cm

Reference	EAN Code	Packaging	Boxed Qty	
60720393	3375537203185	Blister	01/15	w

OUVEA



- **5 JETS:** fine rain, dense rain, massage, fine rain/dense rain and fine rain/massage
- Easy **STOP-JET**, thanks to the button on the handshower handle
- dia. 12 cm

Reference	EAN Code	Packaging	Boxed Qty	
60720392	3375537203178	Blister	01/20	w

EASY



- **1 JET:** fine rain
- Easy **STOP-JET** (button on the handshower head)
- dia. 7 cm

Reference	EAN Code	Packaging	Boxed Qty	
60720390	3375537203154	Blister	01/40	w

TUDOU



- **1 JET:** fine rain
- **STOP-JET** on the handshower handle
- dia. 10 cm

Reference	EAN Code	Packaging	Boxed Qty	
60720389	3375537203147	Blister	01/40	w

TUB



- **1 JET:** fine rain
- dia. 3 cm

Reference	EAN Code	Packaging	Boxed Qty	
60720388	3375537203130	Blister	01/40	w

MOTU/TUAMOTU

2
YEARS
5

- **5 JETS:** fine rain, dense rain, massage, fine rain/massage and fine rain /dense rain
- dia. 8 cm



Reference	EAN Code	Packaging	Boxed Qty	
60720387	3375537203123	Sac	01/40	w
60718956	3375537188949	Trousse	01/24	w

MAUPITI

2
YEARS
1

- **1 JET:** fine rain
- dia. 7 cm



Reference	EAN Code	Packaging	Boxed Qty	
60720386	3375537203116	Blister	01/40	w

CICIA

2
YEARS
2

- **2 JETS:** fine rain and massage
- dia. 7 cm

chromed

Reference	EAN Code	Packaging	Boxed Qty	
63290001	3375539068751	Blister	01/60	w

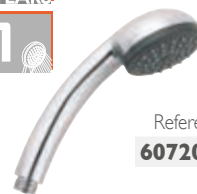
white

Reference	EAN Code	Packaging	Boxed Qty	
63290101	3375539075100	Blister	01/60	w

ARMOR

2
YEARS
1

- **1 JET:** fine rain
- dia. 7 cm



Reference	EAN Code	Packaging	Boxed Qty	
60720383	3375537203086	Blister	01/40	w

BASO



- 1 JET: fine rain
- dia. 6,5 cm



Reference	EAN Code	Packaging	Boxed Qty	
63280001	3375539068744	Blister	01/90	w

EAU VIVE



- 1 JET: fine rain
- 3,5 x 5 cm



Reference	EAN Code	Packaging	Boxed Qty	
HY11540	3375530235084	Blister	01/70	w

ALDEA



- 1 JET: fine rain
- dia. 6 cm



Reference	EAN Code	Packaging	Boxed Qty	
63270001	3375539068737	Blister	01/64	w

ÉMERAUDE



- 1 JET: fine rain
- dia. 6 cm



chromed

Reference	EAN Code	Packaging	Boxed Qty	
63210101	3375539074950	Blister	01/64	w

white

Reference	EAN Code	Packaging	Boxed Qty	
63210001	3375536035954	Blister	01/64	w

SHATTAF WC CHROMED

2
YEARS

STOP

1



- 1 TONIC JET
- **STOP-JET** on the handle
- dia. 3 cm
- turned on by pressing the button
- wall bracket

Reference	EAN Code	Packaging	Boxed Qty	
60720943	3375537208692	Blister	01/12	w
60720917	3375537208425	Bag	01/60	w

SHATTAF WC BLACK/WHITE

2
YEARS

STOP

1



- 1 TONIC JET
- **STOP-JET** on the button of the handshower
- dia. 4 cm
- turned on by pressing the button
- wall bracket

black

Reference	EAN Code	Packaging	Boxed Qty	
63030101	3375536037293	Bag	01/200	w

white

Reference	EAN Code	Packaging	Boxed Qty	
63030001	3375536035947	Bag	01/165	w

Essential

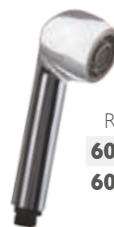


KITCHEN

2
YEARS

ECO

2



- 2 JETS: fine rain and foam
- dia. 5 cm

Reference	EAN Code	Packaging	Boxed Qty	
60720929	3375537208555	Blister	01/12	w
60720916	3375537208418	Bag	01/-	w





JOY



- **1 JET:** fine rain, dia. 10 cm
- soft PVC hose, 1.50 m
- chromed brass tap nut,
- chromed ABS handshower nut
- handshower bracket: 1 position

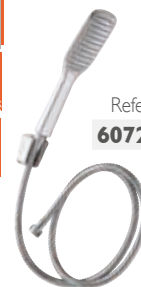
Reference	EAN Code	Packaging	Boxed Qty	
60720865	3375537207909	Freedom	01/12	w

LOOK



- **1 JET:** fine rain, 6 x 13 cm, SOFT aerator
- Power chromed stainless steel hose, 1.5 m, chromed brass tap nut, chromed ABS handshower nut
- handshower bracket: 1 position

Reference	EAN Code	Packaging	Boxed Qty	
60720866	3375537207916	Freedom	01/12	w



CHIC



- **1 JET:** fine rain, dia. 8/10 cm, SOFT aerator
- Power chromed stainless steel hose, 1.5 m, chromed brass tap nut, chromed ABS handshower nut
- handshower bracket: 1 position

Reference	EAN Code	Packaging	Boxed Qty	
60720867	3375537207923	Freedom	01/12	w



ZEN



- **4 JETS:** fine rain, dense rain, massage and fine rain/dense rain. 10 cm, SOFT aerator; **STOP-JET** dial setting
- Silver Twist PVC hose, 1.75 m, chromed brass tap nut and handshower nut
- handshower bracket: 1 position

Reference	EAN Code	Packaging	Boxed Qty	
60720868	3375537207930	Freedom	01/12	w



ANNA

2
YEARS

1

1m50



- 1 JET: fine rain, dia. 7 cm
- soft PVC hose, 1.50 m
- chromed brass tap nut, chromed ABS handshower nut
- handshower bracket: 1 position

Reference	EAN Code	Packaging	Boxed Qty
60720862	3375537207879	Freedom	01/12 w

BALIA

2
YEARS

ECO

5

1m50



- 5 JETS: fine rain, dense rain, massage, fine rain/dense rain and fine rain/massage. 8 cm
- Power chromed stainless steel hose, 1.5 m, chromed brass tap nut, chromed ABS handshower nut
- handshower bracket: 1 position

Reference	EAN Code	Packaging	Boxed Qty
60720861	3375537207862	Freedom	01/12 w

FLORA

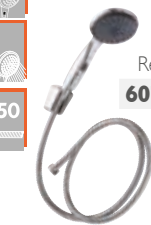
2
YEARS

ECO

STOP

1

1m50



- 1 JET: fine rain, dia. 10 cm
- STOP-JET on the handshower handle
- Power chromed stainless steel hose, 1.5 m, chromed brass tap nut, chromed ABS handshower nut
- handshower bracket: 1 position

Reference	EAN Code	Packaging	Boxed Qty
60720863	3375537207886	Freedom	01/12 w

Dolce



TILA

2
YEARS

ECO

SOFT

2

1m75



- 2 JETS: fine rain and massage, 11 x 11 cm, SOFT aerator
- Silver Twist PVC hose, 1.75 m, chromed brass tap nut and handshower nut
- handshower bracket: 1 position

Reference	EAN Code	Packaging	Boxed Qty
60720864	3375537207893	Freedom	01/12 w

HAPPY

2
YEARS

1m50

- **1 JET:** fine rain, dia. 10 cm, SOFT aerator
- Soft PVC hose, 1.50 m, chromed brass tap nut, chromed ABS handshower nut
- handshower bracket: 1 position



Reference	EAN Code	Packaging	Boxed Qty	
60720869	3375537207947	Freedom	01/12	w

CINDY

2
YEARS

1m50

- **5 JETS:** fine rain, dense rain, massage, fine rain/dense rain and fine rain/massage, dia. 10 cm, **STOP-JET** on the handshower handle
- Power chromed stainless steel hose, 1.5 m, chromed brass tap nut, chromed ABS handshower nut
- handshower bracket: 1 position



Reference	EAN Code	Packaging	Boxed Qty	
60720870	3375537207954	Freedom	01/12	w

EMY

2
YEARS

1m50

- **1 JET:** fine rain, dia. 10 cm, SOFT aerator
- Power chromed stainless steel hose, 1.5 m, chromed brass tap nut, chromed ABS handshower nut
- handshower bracket: 1 position



Reference	EAN Code	Packaging	Boxed Qty	
60720872	3375537207978	Freedom	01/12	w

MAGGY

2
YEARS

1m50

- **1 JET:** fine rain, dia. 10 cm, SOFT aerator
- Soft PVC hose, 1.50 m, chromed brass tap nut, chromed ABS handshower nut
- handshower bracket: 1 position



Reference	EAN Code	Packaging	Boxed Qty	
60720869	3375537207947	Freedom	01/12	w

EASY

2
YEARS

1m75

- **1 JET:** fine rain, dia. 7 cm, **STOP-JET** (button on the handshower head)
- Silver Twist PVC hose, 1.75 m, chromed brass tap nut and handshower nut
- handshower bracket: 1 position



Reference	EAN Code	Packaging	Boxed Qty	
60720871	3375537207961	Freedom	01/12	w

MOTU



- **5 JETS:** fine rain, dense rain, massage, fine rain/massage and fine rain/dense rain 8 cm
- Power metal hose, 1.50 m, chromed brass tap nut, chromed ABS handshower nut
- handshower bracket: 1 position

Reference	EAN Code	Packaging	Boxed Qty	
60720541	3375537204649	Bag	01/12	w

TUAMOTU



- **5 JETS:** fine rain, dense rain, massage, fine rain/massage and fine rain/dense rain 8 cm
- Touch PVC hose (ribbed) 1.50 m, Zamac tap nut, chromed ABS handshower nut
- handshower bracket: 1 position

Reference	EAN Code	Packaging	Boxed Qty	
60717499	3375537174812	Kit	01/22	w

MAUPITI



- **1 JET:** fine rain, dia. 7 cm
- Touch PVC hose (ribbed) 1.50 m, Zamac tap nut, chromed ABS handshower nut
- handshower bracket: 1 position

Reference	EAN Code	Packaging	Boxed Qty	
60718955	3375537188932	Kit	01/22	w

Essential



SHATTAF WC



- Ready to Install
- **1 JET:** tonic, dia. 3 cm **STOP-JET** on the handle
- Power metal hose, 1.50 m, chromed brass tap nut, chromed ABS handshower nut
- handshower bracket: 1 position
- chromed 3-way stopcock
- chromed right angle stopcock
- adapter for hose/right angle stopcock

Reference	EAN Code	Packaging	Boxed Qty	
60720898	3375537208234	Blister	01/8	w
60720918	3375537208432	Bag	01/20	w

EASY STOP



- **1 JET:** fine rain, dia. 7 cm, **STOP-JET** (button on the handshower head)
- Touch PVC hose (ribbed) 1.5 m, Zamac tap nut, chromed ABS handshower nut
- handshower bracket: 1 position

Reference	EAN Code	Packaging	Boxed Qty	
60717256	3375537172566	Blister	01/12	w

CICIA

2
YEARS2
YEARS

1m50

- 2 JETS: fine rain and massage, dia 7 cm
- matt stainless steel hose, 1.5 m, chromed brass tap nut, chromed ABS handshower nut



Reference	EAN Code	Packaging	Boxed Qty
64040001	3375539076060	Bag	01/30 w

BASO

2
YEARS1
YEARS

1m50

- 1 JET: fine rain, dia. 6,5 cm
- matt stainless steel hose, 1.5 m, Zamac tap nut, chromed ABS handshower nut
- handshower wall bracket : I position



Reference	EAN Code	Packaging	Boxed Qty
64500001	3375537150137	Bag	01/26 w

EAU VIVE

2
YEARS1
YEARS

1m50

- 1 JET: fine rain, 3,5 x 5 cm
- Smooth PVC hose 1.50 m
- Zamac tap nut, chromed ABS handshower nut
- handshower wall bracket: I position



Reference	EAN Code	Packaging	Boxed Qty
HYEX115	3375530272881	Bag	01/40 w

ÉMERAUDE CHROMED

2
YEARS1
YEARS

1m50

- 1 JET: fine rain
- matt stainless steel hose, 1.5 m, Zamac tap nut, chromed ABS handshower nut



Reference	EAN Code	Packaging	Boxed Qty
64010101	3375539075483	Bag	01/30 w

ÉMERAUDE WHITE

2
YEARS1
YEARS

1m50

- 1 JET: fine rain
- smooth white PVC hose, 1.50 m, Zamac tap nut, chromed ABS handshower nut



Reference	EAN Code	Packaging	Boxed Qty
64010001	3375539068799	Bag	01/24 w

JOY

2
YEARS

1

1m50



- bar dia. 18 mm, chromed stainless steel, with adjustable wall brackets (height: 70 cm)
- **1 JET:** fine rain, dia. 10 cm
- Soft PVC hose, 1.50 m, chromed brass tap nut, chromed ABS handshower nut

Reference	EAN Code	Packaging	Boxed Qty	
60720877	3375537208029	Blister	01/10	w

LOOK

2
YEARS

ECO

SOFT
H₂O

1

1m50



- bar dia. 18 mm, chromed stainless steel, with adjustable wall brackets (height: 70 cm)
- **1 JET:** fine rain, 6 x 13 cm, SOFT aerator
- Soft PVC hose, 1.50 m, chromed brass tap nut, chromed ABS handshower nut

Reference	EAN Code	Packaging	Boxed Qty	
60720878	3375537208036	Blister	01/10	w

CHIC

2
YEARS

ECO

SOFT
H₂O

1

1m50



- bar dia. 25 mm, chromed stainless steel, with adjustable wall brackets (height: 70 cm)
- **1 JET:** fine rain, 8 x 10 cm, SOFT aerator
- Power chromed stainless steel hose, 1.5 m, chromed brass tap nut, chromed ABS handshower nut

Reference	EAN Code	Packaging	Boxed Qty	
60720879	3375537208043	Blister	01/10	w



URBAN



ZEN

2
YEARS

ECO

SOFT
H₂O

STOP

4

1m50



- bar dia. 25 mm, chromed stainless steel, with adjustable wall brackets (height: 70 cm)
- **4 JETS:** fine rain, dense rain, massage and fine rain/dense rain, dia. 10 cm, SOFT aerator; **STOP-JET** dial setting
- Power chromed stainless steel hose, 1.5 m, chromed brass tap nut, chromed ABS handshower nut

Reference	EAN Code	Packaging	Boxed Qty	
60720880	3375537208050	Blister	01/10	w

Dolce



ANNA

2
YEARS

1
JET

1m50



- bar dia. 18 mm, chromed stainless steel, with adjustable wall brackets (height: 70 cm)
- **1 JET**: fine rain, dia. 7 cm
- Soft PVC hose, 1.50 m, chromed brass tap nut, chromed ABS handshower nut

Reference	EAN Code	Packaging	Boxed Qty	
60720873	3375537207985	Blister	01/10	w

BALIA

2
YEARS

ECO

5
JETS

1m50



- bar dia. 18 mm, chromed stainless steel, with adjustable wall brackets (height: 70 cm)
- **5 JETS** : fine rain, dense rain, massage, fine rain/dense rain, fine rain/massage, dia. 8 cm
- Soft PVC hose, 1.50 m, chromed brass tap nut, chromed ABS handshower nut

Reference	EAN Code	Packaging	Boxed Qty	
60720874	3375537207992	Blister	01/10	w

FLORA

2
YEARS

ECO

STOP

1
JET

1m50



- bar dia. 25 mm, chromed stainless steel, with adjustable wall brackets (height: 70 cm)
- **1 JET**: fine rain, dia. 10 cm, **STOP-JET** on the handshower handle,
- Power chromed stainless steel hose, 1.5 m, chromed brass tap nut, chromed ABS handshower nut

Reference	EAN Code	Packaging	Boxed Qty	
60720875	3375537208005	Blister	01/10	w

TILA

2
YEARS

ECO

SOFT

2
JETS

1m50



- bar dia. 25 mm, chromed stainless steel, with adjustable wall brackets (height: 70 cm)
- **2 JETS**: fine rain, massage, 11 x 11 cm, SOFT aerator
- Power chromed stainless steel hose, 1.5 m, chromed brass tap nut, chromed ABS handshower nut

Reference	EAN Code	Packaging	Boxed Qty	
60720876	3375537208012	Blister	01/10	w

MAGGY

2
YEARS

ECO

SOFT

1

1m50



- bar dia. 18 mm, chromed stainless steel, with adjustable wall brackets (height: 70 cm)
- **1 JET**: fine rain, dia. 10 cm, SOFT aerator
- Soft PVC hose, 1.50 m, chromed brass tap nut, chromed ABS handshower nut

Reference	EAN Code	Packaging	Boxed Qty	
60720881	3375537208067	Blister	01/10	w

CINDY

2
YEARS

ECO

STOP

5

1m50



- bar dia. 18 mm, chromed stainless steel, with adjustable wall brackets (height: 70 cm)
- **5 JETS**: fine rain, dense rain, massage, fine rain/dense rain and fine rain/massage, dia. 10 cm, **STOP-JET** on the handshower handle
- Soft PVC hose, 1.50 m, chromed brass tap nut, chromed ABS handshower nut

Reference	EAN Code	Packaging	Boxed Qty	
60720882	3375537208074	Blister	01/10	w

EMY

2
YEARS

ECO

SOFT

1

1m50



- bar dia. 25 mm, chromed stainless steel, with adjustable wall brackets (height: 70 cm)
- **1 JET**: fine rain, dia. 10 cm, SOFT aerator
- Power chromed stainless steel hose, 1.5 m, chromed brass tap nut, chromed ABS handshower nut

Reference	EAN Code	Packaging	Boxed Qty	
60720883	3375537208081	Blister	01/10	w

EASY

2
YEARS

ECO

STOP

1

1m50



- bar dia. 25 mm, chromed stainless steel, with adjustable wall brackets (height: 70 cm)
- **1 JET**: fine rain, dia. 7 cm, easy **STOP-JET** (button on the handshower head)
- Power chromed stainless steel hose, 1.5 m, chromed brass tap nut, chromed ABS handshower nut

Reference	EAN Code	Packaging	Boxed Qty	
60720884	3375537208098	Blister	01/10	w



VENTOUSE



- bar dia. 25 mm, chromed stainless steel, with adjustable wall brackets (height: 72 cm)
- **3 JETS**: fine rain, massage, fine rain/massage, dia. 8 cm,
- Touch PVC hose (ribbed) 1.50 m, Zamac tap nut, chromed ABS handshower nut

Reference	EAN Code	Packaging	Boxed Qty	
60717935	3375537178940	Blister	01/8	w

CICIA



- bar dia. 25 mm, stainless steel, with adjustable wall brackets (height: 64 cm)
- **2 JETS** : fine rain and massage, dia. 7 cm
- Power chromed stainless steel hose, 1.5 m, Zamac tap nut and handshower nut

Reference	EAN Code	Packaging	Boxed Qty	
65250101	3375537122363	Bag	01/19	w
65250201	3375537127788	Blister	01/8	w

RENO



- bar dia. 18 mm, stainless steel, with adjustable wall brackets (height: 70 cm)
- **4 JETS**: fine rain, dense rain, mist, massage and fine rain/dense rain, dia. 9 cm, **STOP-JET** on shower head
- Power chromed stainless steel hose, 1.5 m, Zamac tap nut, chromed ABS handshower nut

Reference	EAN Code	Packaging	Boxed Qty	
65210001	337539056345	Blister	01/8	w

METAL SHINY TWIST

2
YEARSRESIST
★★★★
METALTWIST
★

- chromed stainless steel hose
- very attractive thanks to its fine weave
- anti-twist
- chromed brass tap nut and handshower nut

1,50 m

Reference	EAN Code	Packaging	Boxed Qty	
60720799	3375537207244	Freedom	01/12	w

1,75 m

Reference	EAN Code	Packaging	Boxed Qty	
60720800	3375537207251	Freedom	01/12	w

2 m

Reference	EAN Code	Packaging	Boxed Qty	
60720801	3375537207268	Freedom	01/12	w

2 chromed brass tap nuts

0.50 m

Reference	EAN Code	Packaging	Boxed Qty	
60721442	3375537213719	Bag	01/-	w

1 m

Reference	EAN Code	Packaging	Boxed Qty	
60721443	3375537213726	Bag	01/-	w

METAL MATT

2
YEARSRESIST
★★★★
PVC

- polished stainless steel hose
- chromed brass tap nut, chromed ABS handshower nut

1,50 m

Reference	EAN Code	Packaging	Boxed Qty	
60720935	3375537208616	Bag	01/20	w

2 m

Reference	EAN Code	Packaging	Boxed Qty	
60720936	3375537208623	Bag	01/20	w

Essential



HOSE STRENGTH

The lifespan of a hose is measured by its tensile strength (the NF requires 50 kg):

RESIST ★★★★ METAL	RESIST ★★★★ METAL	RESIST ★★★★ PVC	RESIST ★★★★ PVC
80 kg	50 kg	40 kg	30 kg

For the metal hoses, there are 2 types of handshower nuts:

- Power: chromed ABS nut
- Power plus: chromed brass nut



METAL STRETCH

2
YEARSRESIST
★★★★
METAL1m50
STRETCH
2m00

- chromed stainless steel hose
- stretches from 1.50 m to 2 m
- chromed brass tap nut and handshower nut

1.50 m to 2 m

Reference	EAN Code	Packaging	Boxed Qty	
60720796	3375537207213	Freedom	01/12	w
60720421	3375537203468	Bag	01/20	w

METAL POWER

2
YEARSRESIST
★★★★
METAL

- chromed stainless steel hose
- chromed brass tap nut, chromed ABS handshower nut

1,50 m

Reference	EAN Code	Packaging	Boxed Qty	
60720790	3375537207152	Freedom	01/12	w
60720422	3375537203475	Bag	01/25	w



1,75 m

Reference	EAN Code	Packaging	Boxed Qty	
60720791	3375537207169	Freedom	01/12	w
60720937	3375537208630	Bag	01/25	w

2 m

Reference	EAN Code	Packaging	Boxed Qty	
60720792	3375537207176	Freedom	01/12	w
60720938	3375537208647	Bag	01/25	w

PVC SILVER TWIST

2
YEARSRESIST
★★★★
PVC

TWIST

- PVC hose (smooth), silver colour
- anti-twist
- chromed brass tap nut
- chromed brass handshower nut

1.50 m

Reference	EAN Code	Packaging	Boxed Qty	
60720802	3375537207275	Freedom	01/12	w
60720416	3375537203413	Bag	01/20	w



1,75 m

Reference	EAN Code	Packaging	Boxed Qty	
60720803	3375537207282	Freedom	01/12	w

2 m

Reference	EAN Code	Packaging	Boxed Qty	
60720804	3375537207299	Freedom	01/12	w

METAL POWER FOR COLUMN

2
YEARSRESIST
★★★★
METAL

- set of 2 chromed stainless steel hoses:
- 1 m for supplying the handshower
- 30 cm for connecting the shower to the taps
- chromed brass nuts.

1 m + 30 cm

Reference	EAN Code	Packaging	Boxed Qty	
60719566	3375537194940	Bag	01/25	w



PVC TOUCH CHROMED

2
YEARSRESIST
★★★★
PVC

- PVC hose (ribbed)
- chromed brass tap nut, chromed ABS handshower nut

1.50 m

Reference	EAN Code	Packaging	Boxed Qty	
60720788	3375537207138	Freedom	01/12	w
60720417	3375537203420	Bag	01/25	w



PVC SOFT BLACK/CHROMED

2
YEARSRESIST
★★★★★
PVC

- PVC hose (smooth)
- 2 colours
- chromed brass tap nut, chromed ABS handshower nut

1.50 m



Reference	EAN Code	Packaging	Boxed Qty	
60720934	3375537208609	Bag	01/20	w

PVC TOUCH WHITE

2
YEARSRESIST
★★★★★
PVC

- PVC hose (ribbed)
- chromed brass tap nut, chromed ABS handshower nut

1.50 m



Reference	EAN Code	Packaging	Boxed Qty	
60720789	3375537207145	Freedom	01/12	w
60720418	3375537203437	Bag	01/20	w

PVC SMOOTH WHITE

2
YEARSRESIST
★★★★★
PVC

- PVC hose (smooth)
- Zamac tap nut
- chromed ABS handshower nut

1.50 m



Reference	EAN Code	Packaging	Boxed Qty	
62210201	3375536032960	Bag	01/20	w

PVC SOFT WHITE/CHROMED

2
YEARSRESIST
★★★★★
PVC

- PVC hose (smooth)
- 2 colours
- chromed brass tap nut, chromed ABS handshower nut

1.50 m



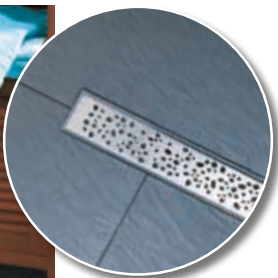
Reference	EAN Code	Packaging	Boxed Qty	
60720787	3375537207121	Freedom	01/12	w
60720419	3375537203444	Bag	01/20	w



SHOW
ME
R

How to choose the best shower waste?

CONFIGURATION	TYPE OF WASTE	OUTLET	SPECIAL FEATURES	ADVANTAGES
TRADITIONAL SHOWERS WITH TRAY	WASTE WITH TRAP	HORIZONTAL OR VERTICAL	DIAMETER OF HOLE: - dia. 90 mm - dia. 60 mm - dia. 50 mm	EASY INSTALL! THE JAMES WASTE SUITS ALL CONFIGURATIONS!
WALK-IN SHOWERS FOR CONCRETE FLOORS	CHANNEL	HORIZONTAL OR VERTICAL	WATERTIGHT	STYLISH SOLUTION SUITABLE FOR LARGE AREAS ULTRA-FAST FLOW RATE!
	FLOOR TRAP	HORIZONTAL OR VERTICAL	SEALED USING WATERPROOF MEMBRANE (supplied with a membrane)	STYLISH SOLUTION FOR A BESPOKE SHOWER! EASY TO INSTALL DUE TO THE SWIVELLING OUTLET!
		HORIZONTAL	NO ADDITIONAL SEALING SYSTEM NEEDED	ECONOMICAL!



Express' Eau

DRAINAGE GULLEY FOR WALK-IN SHOWER

The perfect combination of Design and Performance

DESIGN

Stylish brushed stainless steel grid 43 mm wide providing for a discrete installation which merges perfectly with the bathroom decor:

PERFORMANCE

Quick flow rates from 84 L/min in 15 mm of water. Connecting several outlets will provide improved flow rate and optimum drainage.

SAFETY

To provide the best protection for the installation, the channel is delivered with an anti-cracking sealing flap.

EASY TO INSTALL

Due to its low height, only 80 mm, it does not require much depth and thus makes a walk-in shower easy to install, even in a renovation. Height and channel level are adjusted using feet mounted on a ball joint and adjusted from above.



CHANNEL EXPRESS'EAU

- stylish brushed stainless steel grid
- anti-cracking sealing flap
- adjustable feet
- installation DVD + manual



L 900

channel with droplet pattern grid

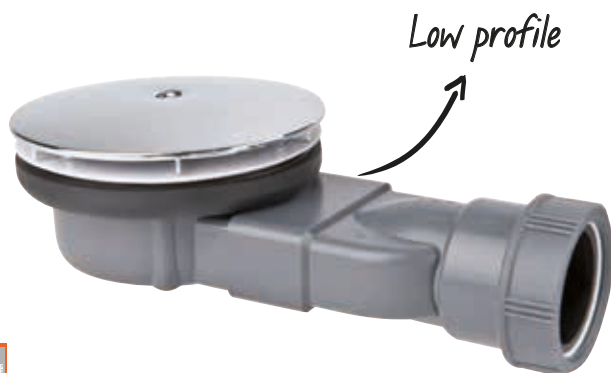
Reference	EAN Code	Packaging	Boxed Qty	
30719786	3375537197132	Box	01/04	w



L 800

channel with line pattern grid

Reference	EAN Code	Packaging	Boxed Qty	
30718194	3375537181537	Box	01/04	w



LOW PROFILE WASTE

- for low profile tray dia. 90
- grid in chromed ABS
- less space required under shower tray: 40 mm overall.

dia. 90 mm - dome in chromed ABS

Reference	EAN Code	Packaging	Boxed Qty	
30120026	3375537200610	Blister	01/12	M

Waste for low profile trays in sandstone or synthetic material!



■ LOW PROFILE

This waste is compact (40 mm overall), and is specially designed for low profile shower trays. It is perfectly adapted to facilities for persons with reduced mobility.

■ GRID

The refined design chromed ABS grid fits easily onto the adaptor.

■ EASY TO CLEAN

The removable trough is accessible from above for quick and easy cleaning.

■ TIP

A special adapter for installation on sandstone trays or trays with conical drain holes is provided.

JAMES: the multi-position waste with fast flow rate!

WIRQUIN
INNOVATION



■ INGENIOUS

The outlet can be swivelled through 360° allowing it to be installed horizontally, vertically or in any position in between.

■ EASY TO MAINTAIN

The trap is fitted with a removable filter for retaining hairs and other waste.



TIGHTENING KEY

REMOVABLE FILTER

■ SMALL OVERALL SIZE

Only 83 mm in depth in horizontal position under the tray!

■ Available in 2 diameters: **90 and 50 mm** compression or adhesive fitting.

JAMES

- multiposition shower waste
- for trays with holes of diameter 90 / 50 mm
- outlet can be swivelled through 360°
- 43 mm dia. outlet, screw fitting or solvent weld

5
YEARS

50

30
40
under 15mm



dia. 90 mm - ABS chrome grid
screw fitting

Reference	EAN Code	Packaging	Boxed Qty	
30717455	3375537174522	Bag	01/10	w

5
YEARS

50

30
40
under 15mm



dia. 90 mm - ABS chrome grid

Reference	EAN Code	Packaging	Boxed Qty	
34230102	3375539071751	Bag	01/30	w

5
YEARS

50

44
53
under 120mm



dia. 50 mm - ABS chrome grid
with compression outlet

Reference	EAN Code	Packaging	Boxed Qty	
30717266	3375537172665	Bag	01/40	w

5
YEARS

50

44
53
under 120mm



dia. 50 mm - ABS chrome grid
solvent weld

Reference	EAN Code	Packaging	Boxed Qty	
30717266	3375537172665	Bag	01/40	w

TWISTO

- self-cleaning vortex shower waste
- for tray with 90 mm diameter hole
- horizontal outlet
- 43 mm dia. outlet, screw fitting or solvent weld
- 3 finishes available



dia. 90 mm - brushed stainless
steel grid

Reference	EAN Code	Packaging	Boxed Qty	
34040501	3375539063428	Bag	01/25	w



dia. 90 mm - ABS chrome dome
solvent weld

Reference	EAN Code	Packaging	Boxed Qty	
34040601	3375539069505	Bag	01/28	w



TWISTO

The waste with a very fast flow rate!

■ HIGH PERFORMANCE

Thanks to the high flow rate and internal shape of its trap, the TWISTO shower waste is **self-cleaning** and **uncloggable** under normal conditions of use.

■ COMPACT

Takes up little space under the tray: only 90 mm high.

■ PRATICAL

The square grid is ideal for tiled trays (facilitates cutting the tiles).



TOURBILLON

The waste that make shower maintenance easy!

■ EASY TO MAINTAIN

Tourbillon wastes are fitted with a container for regular cleaning. The container can be removed and washed with water.



■ WIDE RANGE

Tourbillon shower wastes are available for 2 tray hole diameters and in different finishes grid or dome in chromed ABS.

TOURBILLON

- top access shower waste
- for trays with holes of diameter 90 / 50 mm
- 40 mm dia. outlet, screw fitting or solvent weld for 90 mm dia. hole
- 40/41/43 dia. outlet, screw fitting or solvent weld for 50 mm dia. hole



dia. 90 mm - ABS chrome grid

Reference	EAN Code	Packaging	Boxed Qty	
34060501	3375537128433	Bag	01/30	w



dia. 90 mm - ABS chrome dome

Reference	EAN Code	Packaging	Boxed Qty	
34080101	3375539043109	Bag	01/50	w



dia. 50 mm - ABS chrome grid
both compression & solvent weld

Reference	EAN Code	Packaging	Boxed Qty	
34020201	3375537144815	Bag	01/81	w



dia. 50 mm - ABS chrome dome
both compression & solvent weld

Reference	EAN Code	Packaging	Boxed Qty	
34020001	3375537144785	Bag	01/72	w

FLUSH GRATED SHOWER WASTE



Flush grated shower waste dia. 60

- 1 1/4" Chrome plated brass, unslotted, plastic backnut

Reference	EAN Code	Packaging	Boxed Qty	
WFS02CP	5024139093776	Box	01/64	w



- 1 1/4" Chrome plated brass, slotted, plastic backnut

Reference	EAN Code	Packaging	Boxed Qty	
WFS03CP	5024139087836	Box	01/64	w



Flush grated shower waste dia. 85

- 1 1/2" Chrome plated brass, slotted, plastic backnut

Reference	EAN Code	Packaging	Boxed Qty	
WFS58CP	5024139069924	Box	01/33	w



- 1 1/2" Chrome plated brass, unslotted, plastic backnut

Reference	EAN Code	Packaging	Boxed Qty	
WFS57CP	5024139101341	Box	01/36	w

Flush grated shower waste dia. 72



- 1 1/2" Chrome plated brass, unslotted, plastic backnut

Reference	EAN Code	Packaging	Boxed Qty	
WFS54CP	5024139054616	Box	01/60	w



- 1 1/2" Plastic body, stainless steel waste, unslotted, plastic backnut

Reference	EAN Code	Packaging	Boxed Qty	
WFS34SS	5024139088062	Box	01/200	w



SHOWER TRAY FEET

pack of 4

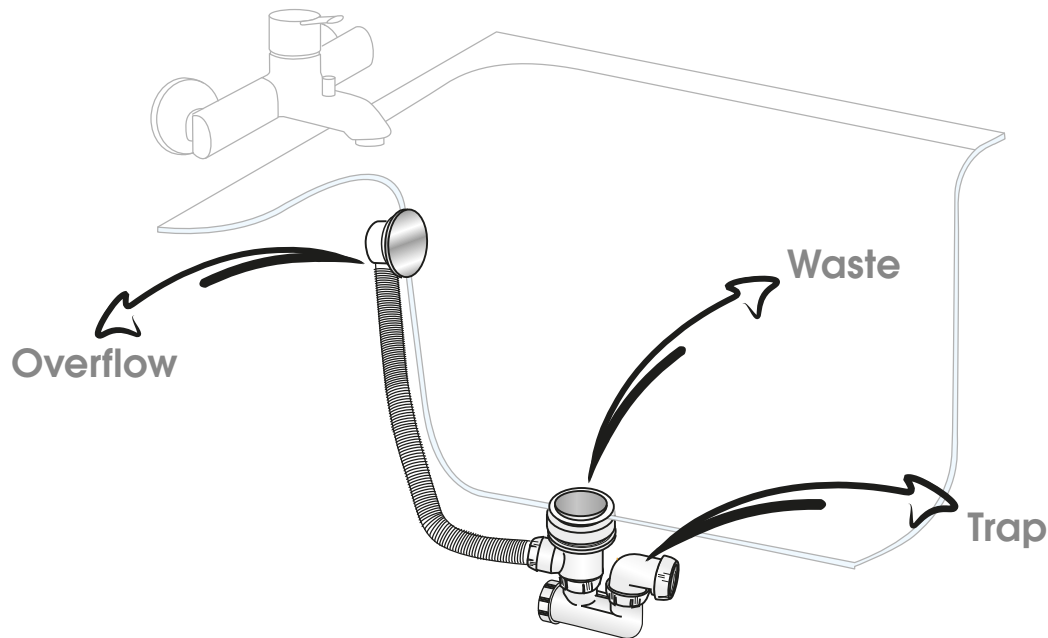
Reference	EAN Code	Packaging	Boxed Qty	
30719799	3375537197248	Hanging bag	01/10/40	w



BATH

How to choose the best **waste** for your **bath**?

COMPONENTS OF A COMPLETE BATH WASTE SYSTEM



WASTE CLOSURE SYSTEM:



Quick-Clac
pressure
operated



Plug



Cable

COMPLETE CABLE WASTE SYSTEM

5
YEARS



- covering plug in chromed ABS
- knob in chromed ABS
- outlet, dia. 40 mm, screw fitting



cable, length 700 mm

Reference	EAN Code	Packaging	Boxed Qty	
34590210	3375537153534	Blister	01/07	w

CABLE WASTE WITHOUT TRAP

5
YEARS



- interior plug in chromed brass
- knob in chromed ABS



cable, length 700 mm

Reference	EAN Code	Packaging	Boxed Qty	
34480001	3375536037958	Bag	01/12	w



ADVANTAGES OF CABLE WASTE SYSTEMS

■ OPEN AND CLOSE WITH A CONTROL KNOB

Knob in chromed ABS.

■ AVAILABLE IN TWO VERSIONS

Covering plug or interior plug.

QUICK-CLAC WASTE WITH TRAP



- trap can be swivelled with drain-off plug
- covering plug in chromed stainless
- overflow cover in chromed ABS
- 40 mm dia. outlet, screw fitting

overflow, length 700 mm

Reference	EAN Code	Packaging	Boxed Qty	
SP760399G	3375536010487	Bag	01/15	w

QUICK-CLAC WASTE



- covering plug in chromed brass
- knob in chromed ABS
- no trap included

overflow, length 700 mm

Reference	EAN Code	Packaging	Boxed Qty	
SP760099	3375536003953	Bag	01/12	w

THE ADVANTAGES OF THE QUICK-CLAC SYSTEM

■ EASY TO USE

The waste is opened and closed simply by pressing on the plug with the foot or hand.

■ EASY TO MAINTAIN

Over time, certain parts may wear. With the Quick-Clac waste, all wear parts remain accessible.

■ HIGH RESISTANCE

Tested for more than 50.000 open and close cycles.

COMPLETE CHROMED WASTE SYSTEM WITH PLUG

2
YEARS



- close with plug and chain
- L500



Reference	EAN Code	Packaging	Boxed Qty	
34550115	3375537165407	Bag	01/24	w

COMPLETE GOLD-TONE WASTE SYSTEM WITH PLUG

2
YEARS



- close with plug and chain
- gold-tone finish



Reference	EAN Code	Packaging	Boxed Qty	
30718435	3375537183937	Bag	01/24	w

WHITE PLUG WASTE WITHOUT TRAP

2
YEARS



- close with plug and chain
- white finish



Reference	EAN Code	Packaging	Boxed Qty	
30718436	3375537183944	Bag	01/24	w

TRAP ONLY

2
YEARS

50

54



- with drain-off plug
- 40 mm dia. outlet, screw fitting

adjustable outlet

Reference	EAN Code	Packaging	Boxed Qty	
SP602	3375530116819	Bag	01/60	w

OVERFLOW HEAD



- for dia. 50 stainless-steel bath

Reference	EAN Code	Packaging	Boxed Qty	
30718430	3375537183883	Bag	01/60	w

CHROME PLATED BATH WASTE



- with plug
- 18" ball chain
- S hook
- plastic backnut

Reference	EAN Code	Packaging	Boxed Qty	
WHK03CP	5024139088789	Box	01/60	w

PLUGS



- bath or basin Quick-Clac plug

stainless steel

Reference	EAN Code	Packaging	Boxed Qty	
SP9260	3375536004745	Bag	10/240	m



- bath pop up plug

1 3/4" - chrome

Reference	EAN Code	Packaging	Boxed Qty	
QHP13CP	5024139066343	Bag	01/90	m

WASHBASIN



How to choose a waste for a washbasin or bowl?

WASTE TYPE:



without overflow



with overflow

WASTE HEIGHT:



bowl or standard washbasin
100 mm



bowl placed on flat surface
75 mm

WASTE CLOSURE SYSTEM:



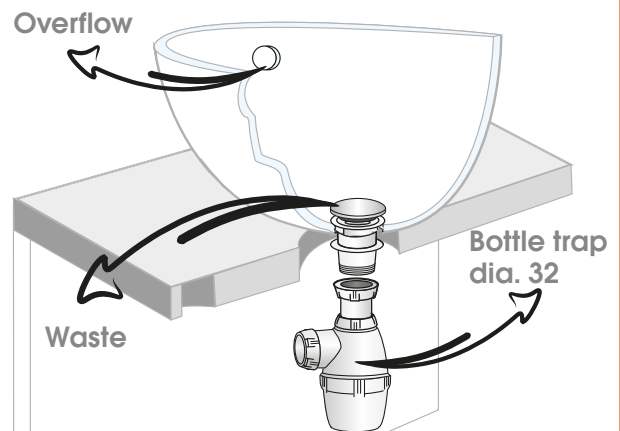
Quick-Clac
pressure operated



Plug



Pull mechanism





Trendy

Be daring and show your traps!

With the Design range of traps, the trap becomes an independent decorative object in your bathroom!



DESIGN RANGE

■ STYLISH & TRENDY

A line of products in chromed brass with modern refined shapes.

■ EASY TO INSTALL

All traps can be adjusted in height.

■ EASY TO MAINTAIN

The inside of the trap can be accessed at any time: access is provided under the trap.

CARÉIS

2
YEARS



- adjustable in height from 145 to 210 mm
- chromed brass

Reference	EAN Code	Packaging	Boxed Qty	
31650002	3375537135196	Box	01/10	w
30718069	3375537180288	Box	01/08	w

LINÉIS

2
YEARS



- adjustable in height from 137 to 205 mm
- chromed brass

75 mm waterseal

Reference	EAN Code	Packaging	Boxed Qty	
30120018	3375537180295	Box	01/12	w

50 mm waterseal

Reference	EAN Code	Packaging	Boxed Qty	
30718070	3375537180295	Box	01/12	w

SMALL CONICAL BOTTLE TRAP

2
YEARS



- adjustable in height from 140 to 250 mm
- chromed brass

Reference	EAN Code	Packaging	Boxed Qty	
30718075	3375537180349	Box	01/12	w

BOTTLE TRAP

2
YEARS



- adjustable in height from 160 to 230 mm
- chromed brass

Reference	EAN Code	Packaging	Boxed Qty	
PBT41CP	5017134116793	Box	01/20	w

LINÉIS MINI

2
YEARS



- adjustable in height from 100 to 210 mm
- chromed brass

Reference	EAN Code	Packaging	Boxed Qty	
30718071	3375537180301	Box	01/18	w

EXTENSION TUBE

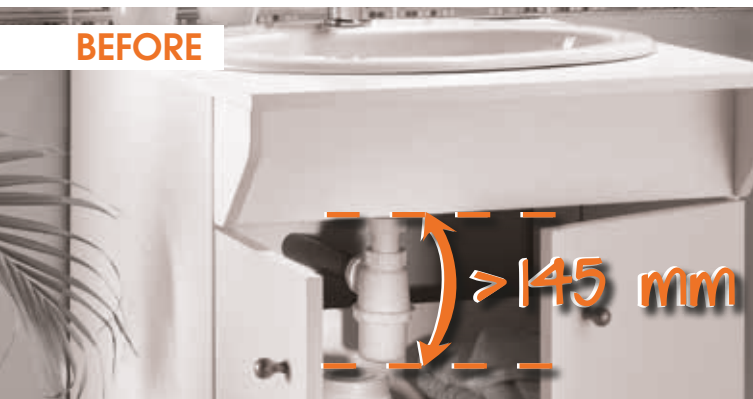
2
YEARS



- height 200 mm
- chromed brass

Reference	EAN Code	Packaging	Boxed Qty	
PET11CP	5024139058133	Bag	01/60	w

BEFORE



AFTER



SENZO

The waterless trap

■ PRINCIPLE

The trap is fitted with a silicone membrane which opens to allow water and waste to pass through then closes again to prevent smells coming back up from the drains.

■ SIMPLE

By doing away with the water seal, Senzo dispenses with size, rigidity and installation constraints in one go.

SENZO

5
YEARS

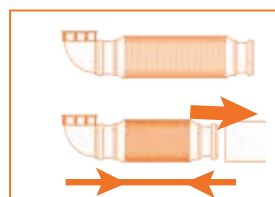
38

- extra flat space saving technology
- high flexibility for easy installation
- dia. 32 push fit outlet

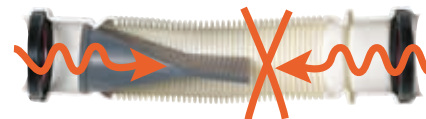


flexible waterless trap

Reference	EAN Code	Packaging	Boxed Qty	
31560002	3375537147250	Bag	01/50	w



CAN BE COMPRESSED EASILY



SENZO FOR PEDESTAL INSTALLATION

- for vertical installation
- dia. 32 push fit outlet



flexible waterless trap

Reference	EAN Code	Packaging	Boxed Qty	
30717469	3375537174669	Bag	01/35	w

ALL IN ONE WHITE



- the only universal bottle trap for sink and basin
- 50 mm water seal
- adjustable in height from 125 up to 170 mm

5
YEARS

50

48



Reference	EAN Code	Packaging	Boxed Qty	
31180002	375537140435	Bag	01/60	w

COMPACT

5
YEARS

25 x2

68

- maleable, double water seal trap
- flexible, low profile washbasin trap
- outlet dia. 32 mm,
- solvent weld



Reference	EAN Code	Packaging	Boxed Qty	
SP3198	3375536024071	Bag	01/50	w



ALL IN ONE: the only universal trap on the market!

No questions to ask, no more risks of making a mistake!

■ UNIVERSAL

Fitted with a 1"1/2 - 1"1/4 reducing ring on the inlet and a multi-diameter (dia. 32 mm - dia. 43 mm) outlet, All in One traps can be used on washbasins, hand basins, bidets and sinks.

■ EASY TO INSTALL

No nuts to tighten, just push the waste tube into the outlet from the trap.

■ SIMPLER TO CLEAN

A recessed base enables the water in the trap to be emptied out when removing the siphon. The base is removed and fitted simply by rotating.

COMPACT: The flexible trap is extra flat!



■ CLEVER

Its all-in-one body design avoids any risk of leakage. Furthermore, the Compact offers better odour retention due to its double water seal.

■ EASY TO CLEAN

In flexible elastomer, it is very easy to maintain. No need to dismantle it, you clean it simply by pressing on the trap body.

It withstands detergents or commercial cleaning agents (bleach, washing-up liquid, scouring powder etc.) and unclogging products containing hydrochloric or sulphuric acid.

QUICK-CLAC WASTES

- chromed plated brass



unslotted, 75 mm, mushroom head metal

Reference	EAN Code	Packaging	Boxed Qty	
32140001	3375539058196	Box	01/40	w



slotted, 75 mm, mushroom head metal

Reference	EAN Code	Packaging	Boxed Qty	
32140101	3375537135356	Box	01/40	w



unslotted, 86 mm, mushroom head metal

Reference	EAN Code	Packaging	Boxed Qty	
32140301	3375537147915	Box	01/36	w



slotted, 86 mm, mushroom head metal

Reference	EAN Code	Packaging	Boxed Qty	
WBK11CP	5017134118940	Box	01/36	w

CAPTIVE WASTES

- chromed plated brass



unslotted, 90 mm, rotary metal plug

Reference	EAN Code	Packaging	Boxed Qty	
WBK96CP	5024139033543	Box	01/45	w



slotted, 90 mm, rotary metal plug

Reference	EAN Code	Packaging	Boxed Qty	
WBK97CP	5024139033536	Box	01/45	w

slotted, 87 mm, plug
with retaining bar

Reference	EAN Code	Packaging	Boxed Qty	
WBS04CP	5024139088918	Box	01/60	w

slotted, 87 mm, metal plug
with retaining bar

Reference	EAN Code	Packaging	Boxed Qty	
WBS44CP	5024139070579	Box	01/45	w

FLUSH GRATED WASTES

- chromed plated brass, plastic backnut

2
YEARS



unslotted, 85 mm

Reference	EAN Code	Packaging	Boxed Qty
WFS02CP	5024139093776	Box	01/64 w

2
YEARS



slotted, 85 mm

Reference	EAN Code	Packaging	Boxed Qty
WFS03CP	5024139087836	Box	01/64 w

PLUG & CHAIN

- chromed plated, plastic backnut

2
YEARS



unslotted, 87 mm

Reference	EAN Code	Packaging	Boxed Qty
WBK01CP	5024139077677	Box	01/60 w

2
YEARS



slotted, 87 mm

Reference	EAN Code	Packaging	Boxed Qty
WBK02CP	5024139063960	Box	01/60 w

2
YEARS



slotted, 87 mm, 2 washers

Reference	EAN Code	Packaging	Boxed Qty
WBK42CP	5024139092663	Box	01/60 w

2
YEARS



slotted, gold effect, 86 mm,

Reference	EAN Code	Packaging	Boxed Qty
30718432	3375537183906	Box	01/48 w

Trendy

Complete sets for basin, XS Pure, frees up space under the basin.



COMPLETE SET XS PURE FOR BASIN

5
YEARS

quick-clac

Reference	EAN Code	Packaging	Boxed Qty	
30721735	3375537216628	Blister	01/14	M

5
YEARS

free flowing fixed dome

Reference	EAN Code	Packaging	Boxed Qty	
30721736	3375537216635	Blister	01/14	M

5
YEARS

quick-clac 100 mm

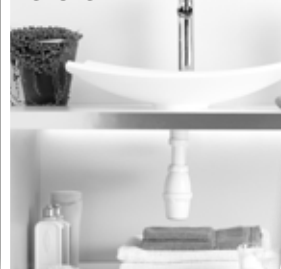
Reference	EAN Code	Packaging	Boxed Qty	
30721737	3375537216642	Blister	01/14	M

5
YEARS

quick-clac with overflow

Reference	EAN Code	Packaging	Boxed Qty	
30721738	3375537216659	Blister	01/14	M

Before



After



■ X-TRA SMALL

Ultra compact set.

Frees up space under the washbasin.

Before

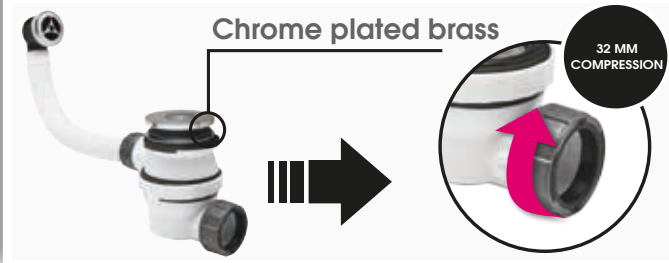


After



■ EASY TO CLEAN

The anti-smell cartridge can be removed from above for easy and quick maintenance.



■ EASY TO INSTALL

Integrated washer in a 1/4 turn nut for a reliable and easy installation.

QUICK-CLAC WASTES



- chrome plated waste



white plastic body
with overflow

Reference	EAN Code	Packaging	Boxed Qty	
SP50299	3375536001690	Bag	01/84	w



chrome plated plastic body
with overflow

Reference	EAN Code	Packaging	Boxed Qty	
32500301	337559043147	Box	01/32	w



■ QUICK-CLAC SYSTEM

Press, it opens; press again, it closes!

The waste opens and closes simply
by pressing with the hand.

Practical and aesthetic solution!

PLUG & CHAIN

2
YEARS

dia. 83 mm

Reference	EAN Code	Packaging	Boxed Qty
WBK83SS	5024139085825	Bag	01/60 w



dia. 64 mm

Reference	EAN Code	Packaging	Boxed Qty
WBK85SS	5024139004758	Bag	01/100 w



dia. 87 mm

Reference	EAN Code	Packaging	Boxed Qty
WBV02CP	5024139091680	Box	01/32 w



dia. 61 mm

Reference	EAN Code	Packaging	Boxed Qty
WBV21BA	5024139080448	Bag	01/50 w

EXTENDABLE CONNECTOR

- dia. 1 1/4" extendable connector
- × dia. 32mm outlet
- Supplied with fixing hook - 270 to 700mm



Reference	EAN Code	Packaging	Boxed Qty
73130001	3375536033578	Box	01/120 m

ADAPTORS

- EU to UK conversion adaptor



dia. 32mm to Ø1 1/4"

Reference	EAN Code	Packaging	Boxed Qty
39452002	3375537162970	Bulk	01/350 m



- 1 1/4" compression adaptor fit for pedestal installations (for vertical drainage)

Reference	EAN Code	Packaging	Boxed Qty
30720532	3375537204557	Bag	01/25 m

PLUGS

- bath or basin Quick-Clac plug



stainless steel

Reference	EAN Code	Packaging	Boxed Qty
SP9260	3375536004745	Bag	10/240 m



- basin pop up plug

1 1/4" - chrome

Reference	EAN Code	Packaging	Boxed Qty
QBPI3CP	5024139090676	Bag	01/160 m

- poly plug

1 1/4" - black



Reference	EAN Code	Packaging	Boxed Qty
QBPO1BL	5024139059239	Loose	01/500 m

- metal plug

1 1/4" - chrome



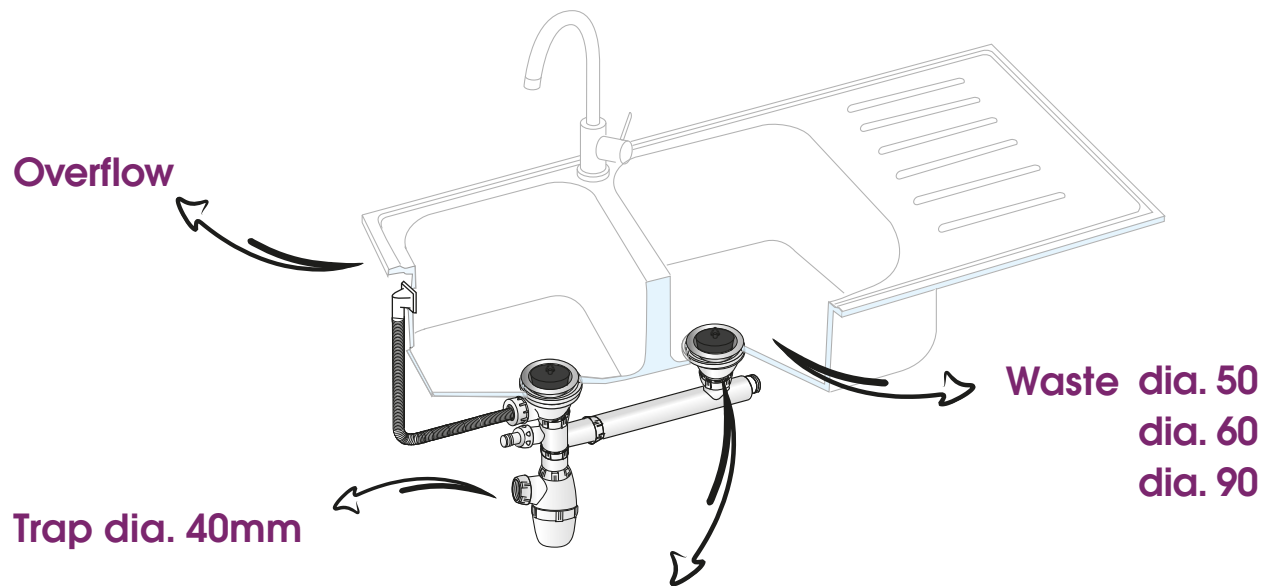
Reference	EAN Code	Packaging	Boxed Qty
QBPI1CP	5024139056948	Bag	01/600 m



ZENITH
KITCHEN

How do you choose the best **waste** for a **sink unit**?

COMPONENTS OF A SINK UNIT WASTE SYSTEM



WASTE CLOSURE SYSTEM:



Basket:
manual operation



Basket:
cable operation



Pressure operated:
Quick-Clac



Plug

BEFORE



AFTER



SENZO

The waterless trap!

THE PRINCIPLE

The trap is fitted with a silicone membrane which opens to allow water and waste to pass through then closes again to prevent smells coming back up from the drains.

By doing away with the water seal, Senzo dispenses with size, rigidity and installation constraints in one go.

SENZO

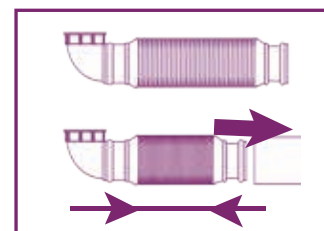
5
YEARS

38

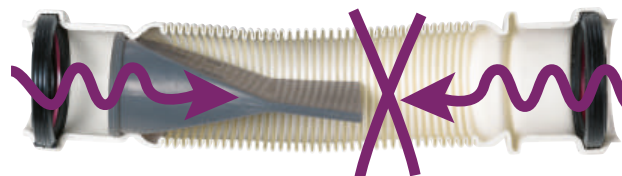
- **SAVES SPACE:** low profile sink trap
- waterless trap
- Push Fit outlet



Reference	EAN Code	Packaging	Boxed Qty	
31160005	3375537160150	Bag	01/40	w



CAN BE COMPRESSED EASILY



ESPACE

- adjustable outlet
- with washing machine connector

5
YEARS

50

39



for single sinks

Reference	EAN Code	Packaging	Boxed Qty	
31000201	3375539056192	Bag	01/60	w

5
YEARS

50

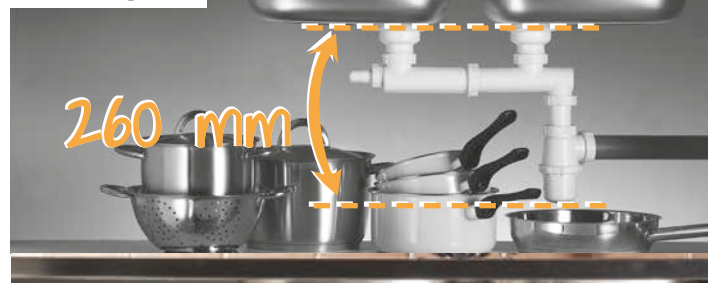
- connecting tube with integrated extra-flat trap
- extension 200 mm
- distance between wastes adjustable from 380 to 500 mm
- adaptor dia. 43



for double sinks

Reference	EAN Code	Packaging	Boxed Qty	
33000203	3375539056253	Bag	01/30	w

BEFORE



AFTER



ESPACE

The trap which frees up space under your sink!

■ SAVES SPACE

The trap takes up only 95 mm in depth under the sink!

■ PRACTICAL

The outlet swivels making it easier to connect to the drain pipe.



ALL IN ONE: The only universal trap on the market!

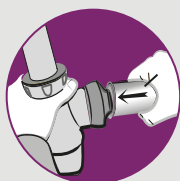
No question to ask, no more risks of making a mistake!

■ UNIVERSAL

Fitted with a reducing ring (1"1/2 - 1"1/4) on the inlet and a multiple-diameter outlet (dia. 32 - dia. 43 mm), **THE ALL IN ONE** traps can be used just as easily on washbasins, hand basins, bidets and sink units!

■ EASY TO INSTALL

No nuts to tighten, just push the waste tube into the trap outlet.



■ SIMPLER TO CLEAN

- A recessed cap enables the water in the trap to be emptied out when removing the siphon.
- The cap is removed and installed simply by rotating.

ALL-IN-ONE BOTTLE TRAP



5
YEARS



- universal trap for sink and washbasin
- adjustable in height from 125 to 170 mm and 165 to 200 mm for the version with washing machine connector

white

Reference	EAN Code	Packaging	Boxed Qty	
31180002	3375537140435	Bag	01/60	w

5
YEARS



white
with washing machine connector

Reference	EAN Code	Packaging	Boxed Qty	
31190002	3375537140442	Bag	01/40	w

SINK COMBINATION WASTE



- 1 1/2" Plastic waste
- poly plug
- black plastic overflow headn ,

black plastic overflow head

Reference	EAN Code	Packaging	Boxed Qty	
WSO33SS	5024139069603	Box	01/30	W



chromed plastic overflow head

Reference	EAN Code	Packaging	Boxed Qty	
WSO5ISS	5024139068842	Box	01/30	W

EXTENDABLE CONNECTOR



- dia. 1 1/2" extendable connector
- dia. 40mm outlet
- supplied with fixing hook - 270 to 720mm

Reference	EAN Code	Packaging	Boxed Qty	
7315000I	3375536033592	Bag	01/100	M

ADAPTORS



- EU to UK conversion adaptor
- dia. 40mm to dia. 1 1/2"**

Reference	EAN Code	Packaging	Boxed Qty	
3945200I	3375539056208	Bulk	01/440	M



- 1 1/2" UK bent compression adaptor
- dia. 40mm**

Reference	EAN Code	Packaging	Boxed Qty	
83114774	5024139039934	Bag	01/25	M

CHAINS



- basin ball chain & stay
- 10" - chrome**

Reference	EAN Code	Packaging	Boxed Qty	
QBK01CP	5024139075758	Bag	01/100	M



- bath ball chain & S hook
- 18" - chrome**

Reference	EAN Code	Packaging	Boxed Qty	
QHK01CP	5024139093141	Bag	01/500	M



- bath oval link chain & S hook
- 18" - chrome**

Reference	EAN Code	Packaging	Boxed Qty	
QHK11CP	5024139076328	Bag	01/500	M

PLUGS



1 1/2" - black

Reference	EAN Code	Packaging	Boxed Qty	
QHP01BL	5024139084804	Loose	01/500	M



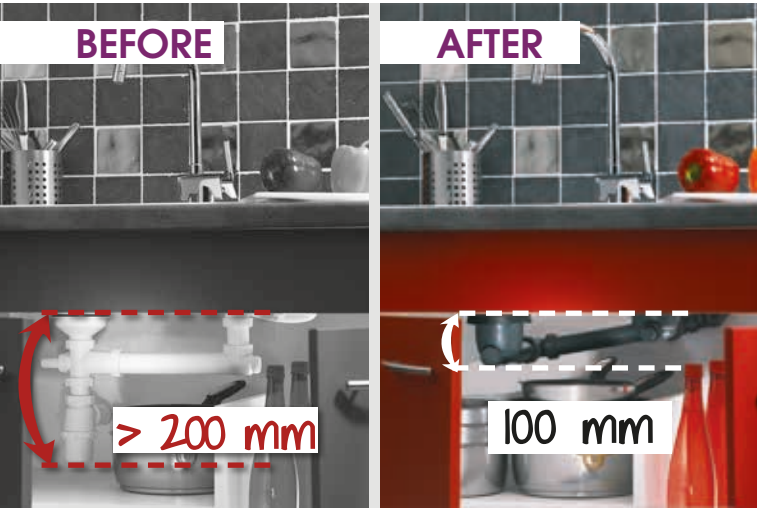
- tap hole stopper
- plastic chrome**

Reference	EAN Code	Packaging	Boxed Qty	
QTH01CP	5024139356222	Bag	01/400	M



plastic white

Reference	EAN Code	Packaging	Boxed Qty	
QTH01WH	5024139356253	Bag	01/400	M



HOPY

Quick-Clac ultra-flat waste

■ SPACE SAVING

Fitted with stench traps, Hopy kits save space with only 100 mm space taken up under the sink.

■ EASY TO MAINTAIN

Easy to maintain and keep clean as the trap can be accessed from above.

■ STYLISH

The waste recovery basket is installed under the plug.

■ CONVENIENT

Can be opened and closed by simply pressing on the plug, Quick-Clac system.



HOPY

- waste and plug in stainless steel, **QUICK-CLAC**
- supplied with 2 overflow grids (1 round and 1 rectangular)

for single sinks with dia. 90 waste

Reference	EAN Code	Packaging	Boxed Qty	
30717614	3375537175949	Bag	01/20	w

ESPACE

2
YEARS

50

35



- basket waste with round overflow,
- MANUAL CONTROL**
- with washing machine connector

for single sinks with dia. 90 waste

Reference	EAN Code	Packaging	Boxed Qty	
TM110099	3375536010333	Bag	01/30	w

2
YEARS

50

39



for double sinks with dia. 90 waste

Reference	EAN Code	Packaging	Boxed Qty	
TM210099	3375536010340	Bag	01/20	w

BASKET STRAINERS

- stainless steel basket strainer waste without overflow

dia. 90 mm



Reference	EAN Code	Packaging	Boxed Qty	
SP2480050	3375536019800	Bag	01/60	w

- stainless steel basket strainer waste with overflow connection

dia. 90 mm



Reference	EAN Code	Packaging	Boxed Qty	
WSB02SS	5024139064172	Box	01/30	w

- stainless steel basket strainer waste with continental overflow

dia. 90 mm



Reference	EAN Code	Packaging	Boxed Qty	
32440001	3375537128471	Bag	01/65	w

- stainless steel basket strainer waste with overflow

dia. 90 mm



Reference	EAN Code	Packaging	Boxed Qty	
WSB70SS	5024139058867	Box	01/30	w

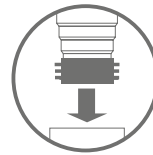
ARE THE
FOUNDATIONS



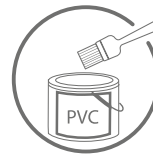
How to choose the right **connector?**

METHODS OF FIXING:

- PUSH-FIT



- SOLVENT WELD





MAGICFLEX PUSH-FIT
FIXING WITHOUT GLUE!

■ NO MORE ANGLE CALCULATIONS!

Thanks to its flexible structure, it can take on the desired angle from 0 à 180° and in 3D!



■ IT CAN COMPENSATE FOR
MISALIGNMENT BETWEEN TWO TUBES

It can be compressed for installation on pipes already in place, or in places with difficult access. Its flexible body absorbs contraction and expansion.

Manufactured in PVC, Magicflex® connectors can resist detergents (bleach, washing-up liquid, washing powder, drain unblocker, etc.).

The same grey colour as used in PVC waste systems, it can be unobtrusively fitted into the installation.

PUSH FIT



- 1 1/4" Flexible elbow

Female-Female White

Reference	EAN Code	Packaging	Boxed Qty	
79019401	3375537127245	Bulk	10/120	w



Female-Female Grey

Reference	EAN Code	Packaging	Boxed Qty	
79019101	3375539057908	Bulk	10/120	w



- 1 1/2" Flexible elbow

Female-Female White

Reference	EAN Code	Packaging	Boxed Qty	
79020201	3375537127238	Bulk	10/70	w



Female-Female Grey

Reference	EAN Code	Packaging	Boxed Qty	
79020101	3375539057953	Bulk	10/70	w



SOLVENT WELD



- 1 1/4" Flexible elbow



Female-Female White

Reference	EAN Code	Packaging	Boxed Qty	
79009007	3375539051968	Bulk	10/150	w



Female-Female Grey

Reference	EAN Code	Packaging	Boxed Qty	
79009301	3375537127214	Bulk	10/150	w

- 1 1/2" Flexible elbow



Female-Female White

Reference	EAN Code	Packaging	Boxed Qty	
79008006	3375539051951	Bulk	10/90	w



Female-Female Grey

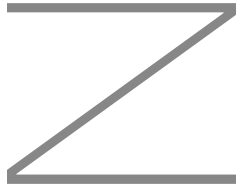
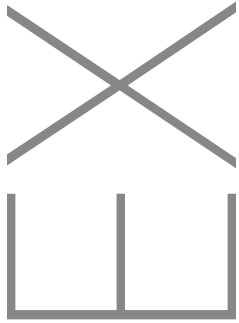
Reference	EAN Code	Packaging	Boxed Qty	
79008301	3375537127221	Bulk	10/90	w

- 4" Flexible elbow soil pipe
- dia. 100/dia. 110 mm



Male-Female Grey

Reference	EAN Code	Packaging	Boxed Qty	
79007001	3375539042713	Bulk	01/15	w



Reference	Page
I44418	43
I44421	46
IOI20028	32
IOI20029	32
IOI20045	30
IOI20208	29
IOI20279	21
IOI20280	21
IOI20281	37
IOI20282	37
IOI20283	37
IOI20284	36
IOI20285	36
IOI20287	21
IOI20288	36
IOI20289	36
IOI20290	37
IOI20291	36
IOI20292	37
IOI20293	37
IOI20294	37
IOI20295	36
IOI20296	33
IOI20301	20
IOI20302	20
IOI20303	20
IOI20304	28
IOI20305	25
IOI20307	27
IOI20308	35
IOI20309	35
IOI20310	34
IOI20312	31
IOI20330	36
IOI20331	35
IOI20332	36
I4000001	28
I4010401	28
I6100006	33

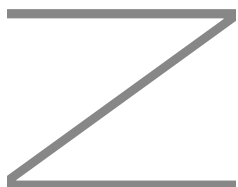
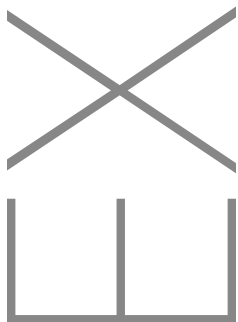
Reference	Page
I6100007	33
I6110011	32
I6300201	34
20120224	46
20120225	46
20717950	50
20717953	50
20717955	50
20717956	50
20717957	50
20717959	55
20717962	56
20717963	57
20717968	58
20717970	58
20718118	45
20718562	56
20718747	45
20718770	55
20718772	56
20718777	50
20718778	50
20718841	58
20719122	57
20719123	56
20719125	56
20719126	56
20719127	55
20719128	58
20719131	57
20719209	59
20719210	59
20719211	59
20719212	59
20719213	59
20719214	59
20719215	59
20719216	59
20719217	59

Reference	Page
20719218	59
20719219	59
20719220	59
20719221	59
20719222	59
20719223	59
20719224	59
20719225	59
20719226	59
20719227	59
20719228	59
20719229	59
20719230	59
20719569	41
20719572	44
20719732	43
20719739	49
20719794	40
20719923	48
20719925	52
20720050	51
20720051	51
20720284	47
20720285	47
20720369	54
20720370	55
20720372	55
20720514	61
20720538	55
20720985	60
20721280	42
20721501	54
20721502	52
20721609	61
20721907	53
20721908	53
20721955	53
20721956	53
20722031	41

Reference	Page
21070001	47
21230001	46
21230004	46
21400001	47
25180001	59
25190001	59
30120018	125
30120026	111
30717266	112
30717266	112
30717455	112
30717469	126
30717614	140
30718069	125
30718070	125
30718071	125
30718075	125
30718194	110
30718430	121
30718432	129
30718435	120
30718436	120
30719786	110
30719799	115
30720532	133
30721735	131
30721736	131
30721737	131
30721738	131
31000201	137
31160005	136
31180002	127
31180002	138
31190002	138
31560002	126
31650002	125
32140001	128
32140101	128
32140301	128

Reference	Page
32440001	141
32500301	132
33000203	137
34020001	114
34020201	114
34040501	113
34040601	113
34060501	114
34080101	114
34230102	112
34480001	118
34550115	120
34590210	118
39452001	139
39452002	133
50120150	16
50720130	16
55718835	19
55719668	19
55719669	19
55719670	19
55719671	19
55719672	19
55719673	19
55719691	19
55721149	18
60717256	99
60717499	99
60717935	104
60718067	80
60718955	99
60718956	93
60719566	106
60720083	78
60720084	78
60720383	93
60720386	93
60720387	93
60720388	92

Reference	Page
60720389	92
60720390	92
60720391	92
60720392	92
60720393	92
60720416	106
60720417	106
60720418	107
60720419	107
60720421	105
60720422	106
60720541	99
60720562	89
60720563	89
60720564	89
60720565	88
60720566	86
60720567	86
60720769	88
60720770	88
60720771	89
60720772	91
60720774	87
60720775	87
60720776	86
60720777	87
60720778	87
60720779	91
60720782	90
60720783	90
60720784	90
60720785	91
60720786	91
60720787	107
60720788	106
60720789	107
60720790	106
60720791	106
60720792	106



Reference	Page
60720796	105
60720799	105
60720800	105
60720801	105
60720802	106
60720803	106
60720804	106
60720861	97
60720862	97
60720863	97
60720864	97
60720865	96
60720866	96
60720867	96
60720868	96
60720869	98
60720870	98
60720871	98
60720872	98
60720873	102
60720874	102
60720875	102
60720876	102
60720877	101
60720878	101
60720879	101
60720880	101
60720881	103
60720882	103
60720883	103
60720884	103
60720898	99
60720916	95
60720917	95
60720918	99
60720929	95
60720934	107
60720935	105
60720936	105

Reference	Page
60720937	106
60720938	106
60720943	95
60720944	83
60720945	83
60720946	83
60720947	83
60720948	81
60720949	82
60720950	82
60720951	82
60720952	82
60721087	83
60721114	81
60721381	77
60721382	75
60721383	75
60721384	75
60721385	74
60721386	74
60721387	74
60721388	73
60721389	73
60721390	72
60721391	72
60721392	76
60721393	76
60721394	85
60721395	85
60721396	85
60721397	85
60721398	84
60721399	84
60721400	84
60721401	84
60721402	84
60721403	84
60721404	84
60721405	84

Reference	Page
60721437	73
60721438	76
60721441	72
60721442	105
60721443	105
60721452	85
60721506	85
60721515	85
60721516	85
60721517	85
60721518	85
60721536	85
62210201	107
63030001	95
63030101	95
63210001	94
63210101	94
63270001	94
63280001	94
63290001	93
63290101	93
64010001	100
64010101	100
64040001	100
64500001	100
65210001	104
65250101	104
65250201	104
68250001	79
68270001	80
68320001	79
70718878	64
70718879	64
70719116	67
70719117	66
70719941	67
70975042	64
71080001	65
71080101	65

Reference	Page
71080201	65
71230000	64
71240001	66
71240101	66
71240201	66
71250001	66
71260101	64
73130001	133
73150001	139
79007001	145
79008006	145
79008301	145
79009007	145
79009301	145
79019101	144
79019401	144
79020101	144
79020201	144
83114774	139
90721077	70
90721078	70
90721268	71
90721269	71
90721583	71
90721663	71
90721664	71
CDC40CP	17
CFE02WH	16
CFE41WH	16
CFH14CP	17
CPL63CP	17
DCA01CP	20
DCA01WH	20
DCA15CP	20
DCPI400	21
DFP01WH	21
DSY8925	31
FDR1ISS	61
FDR11WH	61

Reference	Page
HY11540	94
HYEX115	100
PBT41CP	125
PET11CP	125
QBK01CP	139
QBP01BL	133
QBPI1CP	133
QBPI3CP	133
QHK01CP	139
QHK11CP	139
QHP01BL	139
QHPI3CP	121
QTH01CP	139
QTH01WH	139
RA372	67
RA374	67
SP2480050	141
SP3198	127
SP50299	132
SP602	121
SP760099	119
SP760399G	119
SP9260	121
SP9260	133
TM110099	141
TM210099	141
WBK01CP	129
WBK02CP	129
WBK11CP	128
WBK42CP	129
WBK83SS	133
WBK85SS	133
WBK96CP	128
WBK97CP	128
WBS04CP	128
WBS44CP	128
WBV02CP	133
WBV21BA	133
WFS02CP	115

Reference	Page
WFS02CP	129
WFS03CP	115
WFS03CP	129
WFS34SS	115
WFS54CP	115
WFS57CP	115
WFS58CP	115
WHK03CP	121
WSB02SS	141
WSB70SS	141
WSO33SS	139
WSO51SS	139

GENERAL CONDITIONS OF SALE

These terms of sale are registered with Mr VAN GORKUM, Bailiff, partner of the company SCP JORAND et VAN GORKUM, 7 rue La Fayette – BP 61807 – 44018 NANTES, FRANCE. A copy of these terms of sale appears on the invoices.

Article 1: Application date

The act of placing an order implies complete and unreserved adherence to the present terms of sale which take precedence over any other document, notably all terms of purchase or specific conditions not expressly accepted by WIRQUIN (WIRQUIN PLASTIQUES S.A.S.U). Any document other than the present terms of sale, and notably catalogues, advertising, manuals, only has a (non-contractual), indicative value.

The fact that WIRQUIN does not take advantage, at a given time, of any one of the present clauses may not be interpreted as being renunciation of taking advantage of the said clause at a later stage.

WIRQUIN reserves the right to make any changes it deems appropriate to its catalogue, its products or their presentation at any time with no obligation to modify or take back products already shipped or ordered.

Article 2: Orders

All orders must be submitted in writing or via EDI. The client must verify receipt by printing an order acknowledgement.

Order changes or cancellations requested by the client cannot be considered unless the request is made in writing at least three days before the products are shipped. This waiver does not apply to international sales or orders for specific products or for large volumes. WIRQUIN does not process backorders. For any order for large volumes such as promotional campaigns organized by clients, the client must send an order forecast itemized by model at least three months before shipment.

All orders accepted by WIRQUIN are based on the fact that the client has sufficient financial guarantees to be able to pay amounts due on time. Therefore any change in the client's financial guarantees entitles WIRQUIN to refuse an order, to require disclosure of the client's financial statements or the presentation of sufficient guarantees. Any deterioration of the client's credit may justify the requirement of guarantees or a cash deposit before orders are processed. A denial of coverage by credit insurance will be considered as a reason for requiring a guarantee or payment terms other than those stipulated in Article 5 of these terms of sale. In all cases, products will be delivered only if the client is up to date with all obligations to WIRQUIN.

Article 3: Logistics:

3.1 - Delivery:

Deliveries are made on 80x120 disposable pallets. Any request for other arrangements must be made in writing by the client, and there may be an extra charge if WIRQUIN agrees to the request.

Force majeure incidents releasing WIRQUIN from its obligation to deliver include: war, riot, fire, flood, strike, lockout, accidents, inability to obtain supplies, adverse weather conditions preventing normal movement of carriers, traffic bans imposed by the authorities, etc.

Regardless of the destination of the goods, on delivery, the client must stamp and sign the bill of lading and print the name of the signer.

The client shall unload the goods using a safe process, as quickly as possible and with sufficient personnel.

3.2 - Delays in deliveries and/or products ordered and not delivered:

Unless otherwise expressly agreed by WIRQUIN, delivery dates are indicative. Late delivery does not entitle the client to penalties, damages, compensation, or to cancel or replace orders. The same is true of out-of-stock items (quantities not delivered) affecting deliveries.

Any agreement between the parties on a service level commitment by WIRQUIN and any associated penalties shall be based on the following cumulative prerequisites to be provided by the client: contractual target, rule for calculating the service level, a measurement indicator showing the order lines impacted by a faulty delivery, and appointment of a dedicated supply chain contact for joint analysis and corrective actions. The results must be submitted monthly to WIRQUIN by the dedicated contact.

For specific clients (e.g. OEM) or for large volumes, WIRQUIN can also request a monthly purchase forecast itemized by model.

3.3 - Specific case of deliveries to construction sites

In the specific case of deliveries to construction sites, the specific place of delivery must be expressly indicated by the client on the order form. The client must ensure and manage under its responsibility the manoeuvres necessary for access to and driving on the site. The client must also provide for the presence of a receiving agent on site, whose contact details (name and phone number) must be indicated on the order in addition to the delivery address, to ensure the date and time of delivery and to take charge of receipt of goods, and inspect the condition and the number of packages. If no receiving agent is present on site, the goods will not be unloaded and the cost of delivery will still be charged to the client.

The place of delivery must be accessible by a road that is passable, safe and without risk to the carrier commissioned by WIRQUIN. The client is responsible for any damage suffered by the WIRQUIN delivery vehicles or its carrier due to difficult access and/or inappropriate terrain. Similarly, WIRQUIN declines all liability if any damage on the site is caused by one of its vehicles due to difficult access and/or inappropriate terrain.

The client must contract all necessary insurance for any equipment not paid in full and/or stored on site pending installation, beginning on the date of transfer of risk, that is to say when the product is received and the delivery slip is signed. The insurance must cover the following risks: theft, fire, explosion, natural disasters, transportation, equipment breakage. The client assigns to WIRQUIN any insurance benefits to which it is entitled. If the client is not able to provide proof of necessary insurance, WIRQUIN can contract such insurance at the client's expense. The client must immediately inform WIRQUIN of any loss/claim.

A model cannot be delivered by two separate deliveries.

Article 3.4: Complaints

In case of damage to the merchandise supplied, missing packages, it is the responsibility of the consignee to directly make a claim against the last carrier to whom he must only give a receipt after assuring himself that the dispatch is complete and in good condition, in the conditions and forms laid down in article L133-3 of the Code of Commerce, or of the CMR (truck waybill) if it concerns an international sale. A copy of the complaint will have to be sent to WIRQUIN at the same time.

In case of obvious defects, missing products, non-conformity of the product supplied with the product ordered, any complaint will also have to be made to WIRQUIN by registered letter with acknowledgement of receipt in a time limit of three days for sales on the mainland, seven days for international sales, following receipt of the merchandise. Outside of this time limit, the merchandise will be deemed to be accepted in full without any qualitative or quantitative restriction. It is the responsibility of the client to supply any proof as to the reality of faults or defects noticed. The client will have to afford WIRQUIN every opportunity to proceed with the observation of these defects and to remedy them; he will refrain from intervening himself or having a third party intervene for this purpose.

In case of a defect or non-conformity of products supplied, duly observed by WIRQUIN, and unless WIRQUIN has a special agreement with the distributor, WIRQUIN will issue a credit note for the value of the recognised faulty product, excluding any compensation or damages.

WIRQUIN does not accept penalties for bar code errors or missing bar codes (gencod). WIRQUIN shall, at its discretion, either replace the product or provide a label.

Article 4: Warranty

WIRQUIN certifies that the products it markets conform to the French and/or EU regulations and standards in force on the day of the present document and that they are manufactured respecting human and children's rights, and the social legislation in force in the country of production.

The products are guaranteed against any manufacturing defect or malfunctions not apparent at the time of the initial sale, excluding wear parts and samples intended for exhibition (not guaranteed), for the duration specified in the summary table attached hereafter, subject to the conditions and limitations stated below. The guarantee runs from the date of purchase by the non-professional consumer client, the sales receipt being proof (the guarantee will not be able to be applied in the absence of presentation of the said receipt).

For professional clients (plumbing or sanitary ware industry professionals), it is expressly agreed that the guarantee start date is the date on which the product is installed (the invoice for the installation or

sale of the WC Pack being evidence thereof).

The guarantee is limited, as decided by WIRQUIN, to reimbursement by the issuing of a credit note to the shop, or the repair or replacement by an identical part or part(s) to that or those recognized as being defective or responsible for the malfunction. Under no circumstances will he be able to claim: labour charges, travelling expenses or damages, particularly for loss of use or other reasons. WIRQUIN cannot be held liable, and the warranty cannot be invoked, in case of misuse of the product, such as: non-compliant or inappropriate installation; incorrect maintenance by the user; use of cleaning products (particularly industrial products or products not designed for use on sanitary ware or chemical products); damage by substances or matter conveyed in the water or external factors such as rodents; draining of boiling oil or matter that is liquid at extreme temperatures, negligent handling; accidents and shocks, damage by foreign matter; modification of the original product; incorrect assembly or use of the assembly (particularly failure to comply with the instructions given in the manual supplied with the product); failure to comply with precautions or conservation instructions; damage caused during shipment; damage caused during modification or opening of the packaging (non-exhaustive list). WIRQUIN is in no way responsible for the quality, the pressure, and the flow of the water supply network, variations of which are likely to affect the proper operation of the product.

WIRQUIN guarantees professional clients and/or distributors against any complaints or claims of third parties in relation to its products, notably safety, quality, intellectual and industrial property rights. The guarantee is applicable after judgement and exhaustion of the means of recourse and/or compromise agreement ratified by WIRQUIN up to the liability limits covered by its insurers. The guarantee does not cover indirect, commercial damages, operating losses, or other image damage.

All supplies of spare parts outside the guarantee period will be invoiced, as will the associated postage and shipping charges.

Unless expressly agreed, WIRQUIN does not bear the consequences of an operation of recall or withdrawal of products, when this is carried out solely at the initiative of the client. Only the recall operations carried out at the request of WIRQUIN itself or of an administrative authority will be accepted by WIRQUIN in agreement with the client, without any additional compensation.

Article 5: Financial terms

5.1 Reservation of title:

The transfer of ownership of the products is suspended until the client makes complete payment of their price in principal and costs, even in case of granting of payment times. Any conflicting clause, notably inserted in the client's terms of purchase, is deemed non-written in accordance with article L621-16 of the Code of Commerce.

By express agreement, WIRQUIN will be able to exercise the rights it holds under the present reservation of title clause, for any one of its debts, over all of its products in the possession of the client, the latter being by agreement presumed to be the unpaid ones, and WIRQUIN will be able to take them back or claim them in compensation for all unpaid invoices, without prejudice to its right to cancellation of sales in progress. The client is authorised to resell the products in the framework of the normal running of his company. This resale authorisation is automatically withdrawn in case of receivership or winding-up by decision of the court.

In case of opening of such proceedings, the client undertakes to inform WIRQUIN by registered letter in the 15 days following the declaration of suspension of payments.

The present clause does not prevent the risks of the merchandise from being transferred to the purchaser upon departing the WIRQUIN factory, the said purchaser then taking on the responsibility of trustee and custodian of the said merchandise until complete payment of the price.

5.2 – Price and terms of payment

The price of goods excluding VAT is the current price on the date of order.

Prices are net, ex-works, including packaging, except for special packaging and markings, for which there will be an extra charge. But to account for any price fluctuations between the date of the order and the delivery, the goods will be invoiced at the prices and terms in effect on the date the order is received (plus VAT at the prevailing rate on the invoice date). Clients will be informed of any price changes at least 30 days prior to the change, unless there is a major and/or exceptional increase in the costs of raw materials.

The prices are postage and packing paid at the place requested for any order meeting the minimum amount fixed in the sales agreement.

International deliveries or those to warehouses or to the industry division clientèle may have specific provisions applied to them.

An invoice is drawn up for each delivery and issued on the date the goods leave the factory. This invoice will include all legal notices, including price reductions granted at the date of sale and directly related to the sales transaction.

In the absence of agreement on exemption or in the case of a risk of insolvency such as provided for in article 2 of the present terms, all invoices are payable to Carquefou, and the due date is 30 days from receipt of the merchandise, in accordance with article L441-6 of the French Code of Commerce. Payment is taken to mean the actual collection by WIRQUIN of the sums owed by the client. In case of deferred payment or payment by instalments, in the meaning of the present article, a payment is made up, not by the simple remittance of a commercial paper or a cheque implying an obligation to pay, but by their payment at the agreed date.

In the absence of agreement on exemption, any payment before shipment gives the right to a discount showed on the invoice, except for clients having payment terms of less than 30 days end of month.

In accordance with Article L442-6 1 8 of the French Commercial Code, blocking due and payable debts is illegal when it involves offsetting, or deferring payment for non-compliance with a delivery date or non-forming goods. However, a dispute cannot be deducted from a future payment without the express agreement of WIRQUIN.

5.3 Late payment

In the event of late payment, in accordance with article L441-6 of the French Commercial Code and European Directive 2011/7/EU on late payment, late penalties are due automatically without any reminder necessary, on the day following the due date on the invoice, at the interest rate applied by the European Central Bank (ECB) on its most recent refinancing operation plus 10 percentage points (rate set 2 times per year). Interest accrues from the due date until the date that the payment clears, and in accordance with article L441-6 of the French Commercial Code and Decree No. 2012-1115 of October 2, 2012, a flat fee of 40 euros per invoice is due the day following the due date to cover collection costs.

If WIRQUIN launches a procedure to recover the sums, the client will also have to pay WIRQUIN 15% of the whole outstanding amount including tax for damages.

Any incident occurring at one of the due dates will render all sums due liable for immediate payment without prior notice. WIRQUIN may suspend all the orders in progress without prejudice to any other action.

Under no circumstances, even in the event of a dispute, may the payments be suspended or be the subject of any offset without the prior written agreement of WIRQUIN. Any partial payment will firstly be applied to the unsecured part of the debt, then to the sums longest outstanding. Unless otherwise agreed in writing, WIRQUIN accepts no offset of debts, with the exception of cases of legal offset stated in the French Civil Code.

Article 6: Intellectual and Industrial Property

All technical or commercial documents, sales materials, including sales and merchandising concepts, are the sole property of WIRQUIN, which holds the intellectual and industrial property rights of these items, which shall be returned to it immediately upon request. The client agrees to preserve these items with due care, assuming as such, the responsibility of trustee and custodian.

The client agrees not to use these items in any way that might prejudice the rights or image of WIRQUIN.

WIRQUIN also remains the sole owner and operator of the rights to its trademarks and products, and a sale does not confer any rights to the client in this regard. The same is true regarding the intellectual and industrial property rights related to the products sold.

Article 7: Specific provisions for WIRQUIN listings by clients (retailers and distributors)

By express agreement, the parties agree to refer to the provisions of the agreement signed on 1 January 2002 between UNIBAL and FMB (Code of Conduct, its Annexes and any existing or future updates) for the procedure and the notice periods for ending business relations (delisting and non-renewal of listing). If the length and/or the importance of business relations so justifies, or if previous business agreements more favourable to WIRQUIN exist, the advance notice period of delisting or non-renewal will be longer. For any private label, the advance notice period shall be twice as long to allow WIRQUIN to sell off the specific product inventory. If business relations are ended, WIRQUIN will not take back unsold products or client product inventory. The concepts and other sales materials must be returned by the client at its expense.

Unless specifically agreed, any new listing or change to an existing listing will not result in WIRQUIN taking back third party product inventories or own products which the store no longer sells.

Any discount or commercial cooperation agreement whose assessment base is the revenue earned by WIRQUIN with the client will be based on revenue billed and collected by WIRQUIN after deduction of

unpaid invoices, credit notes and free goods granted, transport costs, bankruptcy filings, and any unpaid invoices and late payment penalties.

Any commercial cooperation or service agreement made by the client for the benefit of WIRQUIN will be invoiced based on reciprocal due dates. Such invoices shall be payable under the same payment terms as those applicable for the payment of goods.

The client, service provider under a commercial cooperation or service agreement, also certifies that the services will be consistent with the French Code of Commerce and undertakes to prove same immediately upon request.

Article 8: Settlement of disputes:

In case of contradiction or difficulty in interpretation, the French version of the present terms of sale takes precedence over any other.

Any dispute relating to the present sale, even an action to enforce a warranty or plurality of defendants, in the absence of an amicable settlement, would be submitted to the exclusive jurisdiction of the Nantes (France) courts.

French law is the only one applicable. In case of international sales, for all questions not settled by the present conditions of sale and French law, the parties agree to refer to the Vienna Convention on Contracts for the International Sale of Goods of 11 April 1980.

GUARANTEE PERIODS (EXCLUDING WEAR AND TEAR PARTS)

RANGES	Models	Warranty (years)
Seats and coordinated accessories	All models.	2
	WC accessories (toilet brushes, toilet roll holders, etc.)	2
WC Mechanisms and Float Valves	All models except special cases below.	10
	Brass mechanisms for renovations.	2
WC cisterns Frames	All models.	10
	All models.	10
WC Pipes and waste connectors	All models except specific cases below.	2
	MAGICFLEX range of flexible connectors.	5
Walk-in showers	All models.	5
Wastes	All models exception the special cases below	2
	Bath cable waste system	5
	TWISTO, TOURBILLON, TYPHON, JAMES and SLIM shower wastes	5
	COMPACT flexible trap.	5
	ALL-IN-ONE range.	5
	QUICK CLAC bath and washbasin wastes.	5
	ESPACE trap and tubing	5
	SENZO waterless trap.	5
	HOPY low profile waste.	5
Other Products	Ventapipes	2
	Seals	wear parts
	Hydrotherapy (handshowers, hoses, columns, trays)	2
	Electronic components	2
	Shower tray feet	5
	Spare parts and accessories	2

NB: If a longer guarantee is stated on the product packaging, the longer guarantee period applies.

november 2017 edition

Design : WIRQUIN

Photography: STUDIO RADIDEAU - STUDIO GARNIER - STUDIO GRAND OUEST

The document is not contractually binding and WIRQUIN Plastiques reserves the right to change its models without prior notice. Reproduction in whole or in part is prohibited.

WIRQUIN LTD
Warmsworth Halt Industrial Estate
WARMSWORTH DONCASTER
DN4 9LS
Customer Service : +44 (0) 333 222 4488

